

**GPR52 Antibody(C-term)**  
**Affinity Purified Rabbit Polyclonal Antibody (Pab)**  
**Catalog # AP19491b**

**Specification**

---

**GPR52 Antibody(C-term) - Product Information**

Application	WB,E
Primary Accession	<a href="#">O9Y2T5</a>
Other Accession	<a href="#">POC5J4</a> , <a href="#">A6OLE7</a> , <a href="#">NP_005675.3</a>
Reactivity	Human
Predicted	Bovine, Mouse
Host	Rabbit
Clonality	Polyclonal
Isotype	Rabbit IgG
Calculated MW	41354
Antigen Region	218-245

**GPR52 Antibody(C-term) - Additional Information**

**Gene ID** 9293

**Other Names**

Probable G-protein coupled receptor 52, GPR52

**Target/Specificity**

This GPR52 antibody is generated from rabbits immunized with a KLH conjugated synthetic peptide between 218-245 amino acids from the C-terminal region of human GPR52.

**Dilution**

WB~~1:1000

**Format**

Purified polyclonal antibody supplied in PBS with 0.09% (W/V) sodium azide. This antibody is purified through a protein A column, followed by peptide affinity purification.

**Storage**

Maintain refrigerated at 2-8°C for up to 2 weeks. For long term storage store at -20°C in small aliquots to prevent freeze-thaw cycles.

**Precautions**

GPR52 Antibody(C-term) is for research use only and not for use in diagnostic or therapeutic procedures.

**GPR52 Antibody(C-term) - Protein Information**

**Name** GPR52 {ECO:0000303|PubMed:9931487, ECO:0000312|HGNC:HGNC:4508}

**Function** Gs-coupled receptor activated by antipsychotics reserpine leading to an increase in

intracellular cAMP and its internalization (PubMed:[24587241](#)). May play a role in locomotor activity through modulation of dopamine, NMDA and ADORA2A-induced locomotor activity. These behavioral changes are accompanied by modulation of the dopamine receptor signaling pathway in striatum (PubMed:[24587241](#)). Modulates HTT level via cAMP-dependent but PKA independent mechanisms through activation of RAB39B that translocates HTT to the endoplasmic reticulum, thus avoiding proteasome degradation (PubMed:[25738228](#)).

#### Cellular Location

Cell membrane; Multi-pass membrane protein.

#### Tissue Location

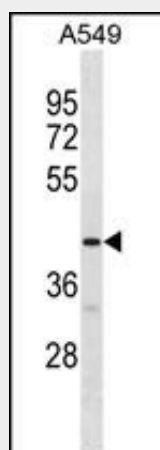
Expressed in brain, especially in striatum.

### GPR52 Antibody(C-term) - Protocols

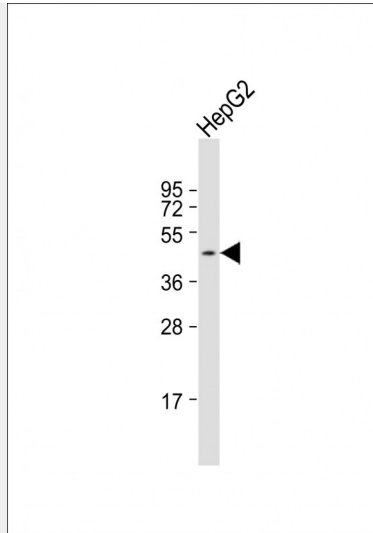
Provided below are standard protocols that you may find useful for product applications.

- [Western Blot](#)
- [Blocking Peptides](#)
- [Dot Blot](#)
- [Immunohistochemistry](#)
- [Immunofluorescence](#)
- [Immunoprecipitation](#)
- [Flow Cytometry](#)
- [Cell Culture](#)

### GPR52 Antibody(C-term) - Images



GPR52 Antibody (C-term) (Cat. #AP19491b) western blot analysis in A549 cell line lysates (35ug/lane). This demonstrates the GPR52 antibody detected the GPR52 protein (arrow).



Anti-GPR52 Antibody (C-term) at 1:1000 dilution + HepG2 whole cell lysate Lysates/proteins at 20  $\mu$ g per lane. Secondary Goat Anti-Rabbit IgG, (H+L), Peroxidase conjugated at 1/10000 dilution. Predicted band size : 41 kDa Blocking/Dilution buffer: 5% NFDN/TBST.

#### **GPR52 Antibody(C-term) - Background**

Members of the G protein-coupled receptor (GPR) family play important roles in signal transduction from the external environment to the inside of the cell.

#### **GPR52 Antibody(C-term) - References**

Sawzdargo, M., et al. Brain Res. Mol. Brain Res. 64(2):193-198(1999)