

**RBL1 Antibody(C-term)**  
**Affinity Purified Rabbit Polyclonal Antibody (Pab)**  
**Catalog # AP19390B**

**Specification**

---

**RBL1 Antibody(C-term) - Product Information**

Application	WB,E
Primary Accession	<a href="#">P28749</a>
Other Accession	<a href="#">NP_002886.2</a>
Reactivity	Human
Host	Rabbit
Clonality	Polyclonal
Isotype	Rabbit IgG
Calculated MW	120847
Antigen Region	1007-1035

**RBL1 Antibody(C-term) - Additional Information**

**Gene ID** 5933

**Other Names**

Retinoblastoma-like protein 1, 107 kDa retinoblastoma-associated protein, p107, pRb1, RBL1

**Target/Specificity**

This RBL1 antibody is generated from rabbits immunized with a KLH conjugated synthetic peptide between 1007-1035 amino acids from the C-terminal region of human RBL1.

**Dilution**

WB~~1:1000

**Format**

Purified polyclonal antibody supplied in PBS with 0.09% (W/V) sodium azide. This antibody is purified through a protein A column, followed by peptide affinity purification.

**Storage**

Maintain refrigerated at 2-8°C for up to 2 weeks. For long term storage store at -20°C in small aliquots to prevent freeze-thaw cycles.

**Precautions**

RBL1 Antibody(C-term) is for research use only and not for use in diagnostic or therapeutic procedures.

**RBL1 Antibody(C-term) - Protein Information**

**Name** RBL1

**Function** Key regulator of entry into cell division (PubMed:[17671431](#)). Directly involved in heterochromatin formation by maintaining overall chromatin structure and, in particular, that of

constitutive heterochromatin by stabilizing histone methylation (By similarity). Recruits and targets histone methyltransferases KMT5B and KMT5C, leading to epigenetic transcriptional repression (By similarity). Controls histone H4 'Lys-20' trimethylation (By similarity). Probably acts as a transcription repressor by recruiting chromatin-modifying enzymes to promoters (By similarity). Potent inhibitor of E2F-mediated trans-activation (PubMed:[8319904](#)). May act as a tumor suppressor (PubMed:[8319904](#)).

#### Cellular Location

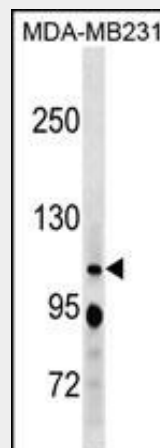
Nucleus.

#### RBL1 Antibody(C-term) - Protocols

Provided below are standard protocols that you may find useful for product applications.

- [Western Blot](#)
- [Blocking Peptides](#)
- [Dot Blot](#)
- [Immunohistochemistry](#)
- [Immunofluorescence](#)
- [Immunoprecipitation](#)
- [Flow Cytometry](#)
- [Cell Culture](#)

#### RBL1 Antibody(C-term) - Images



RBL1 Antibody (C-term)(Cat. #AP19390b) western blot analysis in MDA-MB231 cell line lysates (35ug/lane). This demonstrates the RBL1 antibody detected the RBL1 protein (arrow).

#### RBL1 Antibody(C-term) - Background

The protein encoded by this gene is similar in sequence and possibly function to the product of the retinoblastoma 1 (RB1) gene. The RB1 gene product is a tumor suppressor protein that appears to be involved in cell cycle regulation, as it is phosphorylated in the S to M phase transition and is dephosphorylated in the G1 phase of the cell cycle. Both the RB1 protein and the product of this gene can form a complex with adenovirus E1A protein and SV40 large T-antigen, with the SV40 large T-antigen binding only to the unphosphorylated form of each protein. In addition, both proteins can inhibit the transcription

of cell cycle genes containing E2F binding sites in their promoters. Due to the sequence and biochemical similarities with the RB1 protein, it is thought that the protein encoded by this gene may also be a tumor suppressor. Two transcript variants encoding different isoforms have been found for this gene.

#### **RBL1 Antibody(C-term) - References**

Jayadeva, G., et al. J. Biol. Chem. 285(39):29863-29873(2010)  
Liu, C.Y., et al. Carcinogenesis 31(7):1259-1263(2010)  
Rose, J.E., et al. Mol. Med. 16 (7-8), 247-253 (2010) :  
Yerges, L.M., et al. J. Bone Miner. Res. 24(12):2039-2049(2009)  
Cunningham, J.M., et al. Br. J. Cancer 101(8):1461-1468(2009)