

**Mouse Tshz1 Antibody(Center)**  
**Affinity Purified Rabbit Polyclonal Antibody (Pab)**  
**Catalog # AP19383c**

**Specification**

---

**Mouse Tshz1 Antibody(Center) - Product Information**

Application	WB,E
Primary Accession	<a href="#">Q5DTH5</a>
Other Accession	<a href="#">NP_001074769.1</a>
Reactivity	Human, Mouse
Host	Rabbit
Clonality	Polyclonal
Isotype	Rabbit IgG
Calculated MW	118567
Antigen Region	639-665

**Mouse Tshz1 Antibody(Center) - Additional Information**

**Gene ID** 110796

**Other Names**

Teashirt homolog 1, Serologically defined colon cancer antigen 3 homolog, Tshz1, Kiaa4206, Sdccag33, Tsh1

**Target/Specificity**

This Mouse Tshz1 antibody is generated from rabbits immunized with a KLH conjugated synthetic peptide between 639-665 amino acids from the Central region of mouse Tshz1.

**Dilution**

WB~~1:1000

**Format**

Purified polyclonal antibody supplied in PBS with 0.09% (W/V) sodium azide. This antibody is purified through a protein A column, followed by peptide affinity purification.

**Storage**

Maintain refrigerated at 2-8°C for up to 2 weeks. For long term storage store at -20°C in small aliquots to prevent freeze-thaw cycles.

**Precautions**

Mouse Tshz1 Antibody(Center) is for research use only and not for use in diagnostic or therapeutic procedures.

**Mouse Tshz1 Antibody(Center) - Protein Information**

**Name** Tshz1

**Synonyms** Kiaa4206, Sdccag33, Tsh1

**Function** Probable transcriptional regulator involved in developmental processes. May act as a transcriptional repressor (Potential).

**Cellular Location**

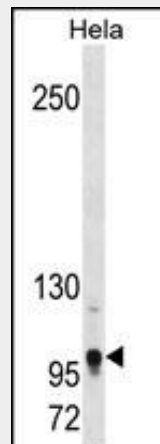
Nucleus.

**Mouse Tshz1 Antibody(Center) - Protocols**

Provided below are standard protocols that you may find useful for product applications.

- [Western Blot](#)
- [Blocking Peptides](#)
- [Dot Blot](#)
- [Immunohistochemistry](#)
- [Immunofluorescence](#)
- [Immunoprecipitation](#)
- [Flow Cytometry](#)
- [Cell Culture](#)

**Mouse Tshz1 Antibody(Center) - Images**



Mouse Tshz1 Antibody (Center)(Cat. #AP19383c) western blot analysis in HeLa cell line lysates (35ug/lane).This demonstrates the Mouse Tshz1 antibody detected the Mouse Tshz1 protein (arrow).

**Mouse Tshz1 Antibody(Center) - Background**

Probable transcriptional regulator involved in developmental processes. May act as a transcriptional repressor (Potential).

**Mouse Tshz1 Antibody(Center) - References**

- Endoh-Yamagami, S., et al. Dev. Biol. 340(1):41-53(2010)  
Jenkins, D., et al. Nephrol. Dial. Transplant. 25(1):54-60(2010)  
Carney, R.S., et al. Cereb. Cortex 19(4):745-759(2009)  
Kajiwara, Y., et al. PLoS ONE 4 (4), E5071 (2009) :  
Core, N., et al. Dev. Biol. 308(2):407-420(2007)