

**PEBP4 Antibody (Center)**  
**Affinity Purified Rabbit Polyclonal Antibody (Pab)**  
**Catalog # AP19359c**

## Specification

---

### PEBP4 Antibody (Center) - Product Information

Application	WB,E
Primary Accession	<a href="#">O96S96</a>
Other Accession	<a href="#">NP_659399.2</a>
Reactivity	Human
Host	Rabbit
Clonality	Polyclonal
Isotype	Rabbit IgG
Antigen Region	100-127

### PEBP4 Antibody (Center) - Additional Information

**Gene ID** 157310

#### Other Names

Phosphatidylethanolamine-binding protein 4, PEBP-4, hPEBP4, Protein cousin-of-RKIP 1, PEBP4, CORK1

#### Target/Specificity

This PEBP4 antibody is generated from rabbits immunized with a KLH conjugated synthetic peptide between 100-127 amino acids from the Central region of human PEBP4.

#### Dilution

WB~~1:1000

#### Format

Purified polyclonal antibody supplied in PBS with 0.09% (W/V) sodium azide. This antibody is purified through a protein A column, followed by peptide affinity purification.

#### Storage

Maintain refrigerated at 2-8°C for up to 2 weeks. For long term storage store at -20°C in small aliquots to prevent freeze-thaw cycles.

#### Precautions

PEBP4 Antibody (Center) is for research use only and not for use in diagnostic or therapeutic procedures.

### PEBP4 Antibody (Center) - Protein Information

**Name** PEBP4

**Synonyms** CORK1

**Function** Promotes AKT phosphorylation, suggesting a possible role in the PI3K-AKT signaling pathway.

**Cellular Location**

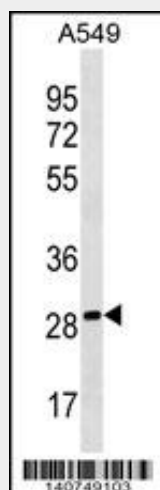
Secreted.

**PEBP4 Antibody (Center) - Protocols**

Provided below are standard protocols that you may find useful for product applications.

- [Western Blot](#)
- [Blocking Peptides](#)
- [Dot Blot](#)
- [Immunohistochemistry](#)
- [Immunofluorescence](#)
- [Immunoprecipitation](#)
- [Flow Cytometry](#)
- [Cell Culture](#)

**PEBP4 Antibody (Center) - Images**



PEBP4 Antibody (Center)(Cat. #AP19359c) western blot analysis in A549 cell line lysates (35ug/lane). This demonstrates the PEBP4 antibody detected the PEBP4 protein (arrow).

**PEBP4 Antibody (Center) - Background**

The phosphatidylethanolamine (PE)-binding proteins, including PEBP4, are an evolutionarily conserved family of proteins with pivotal biologic functions, such as lipid binding and inhibition of serine proteases (Wang et al., 2004 [PubMed 15302887]).

**PEBP4 Antibody (Center) - References**

Liu, H., et al. J. Biol. Chem. 285(29):21934-21942(2010)  
Rose, J.E., et al. Mol. Med. 16 (7-8), 247-253 (2010) :  
Trynka, G., et al. Gut 58(8):1078-1083(2009)  
Garcia, R., et al. EMBO Rep. 10(3):278-284(2009)

Uhl, G.R., et al. Arch. Gen. Psychiatry 65(6):683-693(2008)