

SYT4 Antibody (N-term)
Affinity Purified Rabbit Polyclonal Antibody (Pab)
Catalog # AP19352a

Specification

SYT4 Antibody (N-term) - Product Information

Application	WB,E
Primary Accession	O9H2B2
Other Accession	NP_065834.1
Reactivity	Human
Host	Rabbit
Clonality	Polyclonal
Isotype	Rabbit IgG
Calculated MW	47958
Antigen Region	57-85

SYT4 Antibody (N-term) - Additional Information

Gene ID 6860

Other Names

Synaptotagmin-4, Synaptotagmin IV, SytIV, SYT4, KIAA1342

Target/Specificity

This SYT4 antibody is generated from rabbits immunized with a KLH conjugated synthetic peptide between 57-85 amino acids from the N-terminal region of human SYT4.

Dilution

WB~~1:1000

Format

Purified polyclonal antibody supplied in PBS with 0.09% (W/V) sodium azide. This antibody is purified through a protein A column, followed by peptide affinity purification.

Storage

Maintain refrigerated at 2-8°C for up to 2 weeks. For long term storage store at -20°C in small aliquots to prevent freeze-thaw cycles.

Precautions

SYT4 Antibody (N-term) is for research use only and not for use in diagnostic or therapeutic procedures.

SYT4 Antibody (N-term) - Protein Information

Name SYT4

Synonyms KIAA1342

Function Synaptotagmin family member which does not bind Ca(2+) (By similarity) (PubMed:[23999003](#)). Involved in neuronal dense core vesicles (DCVs) mobility through its interaction with KIF1A. Upon increased neuronal activity, phosphorylation by MAPK8/JNK1 destabilizes the interaction with KIF1A and captures DCVs to synapses (By similarity). Plays a role in dendrite formation by melanocytes (PubMed:[23999003](#)).

Cellular Location

Cytoplasmic vesicle, secretory vesicle, neuronal dense core vesicle membrane {ECO:0000250|UniProtKB:P50232}; Single-pass membrane protein {ECO:0000250|UniProtKB:P50232}

Tissue Location

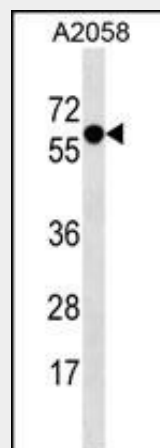
Expressed in melanocytes (PubMed:23999003). Expressed in brain. Within brain, expression is highest in hippocampus, with substantial levels also detected in amygdala and thalamus (PubMed:23999003).

SYT4 Antibody (N-term) - Protocols

Provided below are standard protocols that you may find useful for product applications.

- [Western Blot](#)
- [Blocking Peptides](#)
- [Dot Blot](#)
- [Immunohistochemistry](#)
- [Immunofluorescence](#)
- [Immunoprecipitation](#)
- [Flow Cytometry](#)
- [Cell Culture](#)

SYT4 Antibody (N-term) - Images



SYT4 Antibody (N-term)(Cat. #AP19352a) western blot analysis in A2058 cell line lysates (35ug/lane). This demonstrates the SYT4 antibody detected the SYT4 protein (arrow).

SYT4 Antibody (N-term) - Background

SYT4 may be involved in Ca(2+)-dependent exocytosis of secretory vesicles through Ca(2+) and phospholipid binding to the C2 domain or may serve as Ca(2+) sensors in the process of vesicular trafficking and exocytosis.

SYT4 Antibody (N-term) - References

- Need, A.C., et al. Eur. J. Hum. Genet. 17(7):946-957(2009)
Sonuga-Barke, E.J., et al. Am. J. Med. Genet. B Neuropsychiatr. Genet. 147B (8), 1359-1368 (2008) :
Ferguson, G.D., et al. J. Biol. Chem. 275(47):36920-36926(2000)
Mizutani, A., et al. J. Biol. Chem. 275(13):9823-9831(2000)
Thomas, D.M., et al. Mol. Biol. Cell 10(7):2285-2295(1999)