

Mouse Crkl Antibody (C-term)
Affinity Purified Rabbit Polyclonal Antibody (Pab)
Catalog # AP19334b

Specification

Mouse Crkl Antibody (C-term) - Product Information

| | |
|-------------------|--|
| Application | WB,E |
| Primary Accession | P47941 |
| Other Accession | Q5U2U2 , NP_031790.2 |
| Reactivity | Mouse |
| Predicted | Rat |
| Host | Rabbit |
| Clonality | Polyclonal |
| Isotype | Rabbit IgG |
| Calculated MW | 33830 |
| Antigen Region | 275-303 |

Mouse Crkl Antibody (C-term) - Additional Information

Gene ID 12929

Other Names

Crk-like protein, Crkl, Crkol

Target/Specificity

This Mouse Crkl antibody is generated from rabbits immunized with a KLH conjugated synthetic peptide between 275-303 amino acids from the C-terminal region of mouse Crkl.

Dilution

WB~~1:1000

Format

Purified polyclonal antibody supplied in PBS with 0.09% (W/V) sodium azide. This antibody is purified through a protein A column, followed by peptide affinity purification.

Storage

Maintain refrigerated at 2-8°C for up to 2 weeks. For long term storage store at -20°C in small aliquots to prevent freeze-thaw cycles.

Precautions

Mouse Crkl Antibody (C-term) is for research use only and not for use in diagnostic or therapeutic procedures.

Mouse Crkl Antibody (C-term) - Protein Information

Name Crkl

Synonyms Crkol

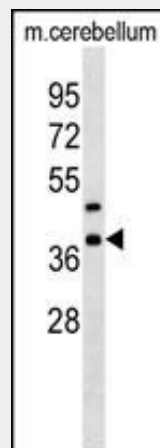
Function May mediate the transduction of intracellular signals.

Mouse Crkl Antibody (C-term) - Protocols

Provided below are standard protocols that you may find useful for product applications.

- [Western Blot](#)
- [Blocking Peptides](#)
- [Dot Blot](#)
- [Immunohistochemistry](#)
- [Immunofluorescence](#)
- [Immunoprecipitation](#)
- [Flow Cytometry](#)
- [Cell Culture](#)

Mouse Crkl Antibody (C-term) - Images



Mouse Crkl Antibody (C-term)(Cat. #AP19334b) western blot analysis in mouse cerebellum tissue lysates (35ug/lane). This demonstrates the Crkl antibody detected the Crkl protein (arrow).

Mouse Crkl Antibody (C-term) - Background

Crkl may mediate the transduction of intracellular signals.

Mouse Crkl Antibody (C-term) - References

- Hallock, P.T., et al. *Genes Dev.* 24(21):2451-2461(2010)
Seo, J.H., et al. *Cancer Res.* 70(18):7325-7335(2010)
Vallejo-Illarramendi, A., et al. *J. Clin. Invest.* 119(8):2218-2230(2009)
Seo, J.H., et al. *Mol. Cell. Biol.* 29(11):3076-3087(2009)
Johnson, K.J., et al. *PLoS ONE* 4 (10), E7439 (2009) :