

ENTPD5 Antibody (C-term)
Affinity Purified Rabbit Polyclonal Antibody (Pab)
Catalog # AP19295b

Specification

ENTPD5 Antibody (C-term) - Product Information

Application	WB,E
Primary Accession	O75356
Other Accession	NP_001240.1
Reactivity	Human
Host	Rabbit
Clonality	Polyclonal
Isotype	Rabbit IgG
Calculated MW	47517
Antigen Region	333-362

ENTPD5 Antibody (C-term) - Additional Information

Gene ID 957

Other Names

Ectonucleoside triphosphate diphosphohydrolase 5, NTPDase 5, CD39 antigen-like 4, ER-UDPase, Guanosine-diphosphatase ENTPD5, GDPase ENTPD5, Nucleoside diphosphatase, Uridine-diphosphatase ENTPD5, UDPase ENTPD5, ENTPD5, CD39L4, PCPH

Target/Specificity

This ENTPD5 antibody is generated from rabbits immunized with a KLH conjugated synthetic peptide between 333-362 amino acids from the C-terminal region of human ENTPD5.

Dilution

WB~~1:1000

Format

Purified polyclonal antibody supplied in PBS with 0.09% (W/V) sodium azide. This antibody is purified through a protein A column, followed by peptide affinity purification.

Storage

Maintain refrigerated at 2-8°C for up to 2 weeks. For long term storage store at -20°C in small aliquots to prevent freeze-thaw cycles.

Precautions

ENTPD5 Antibody (C-term) is for research use only and not for use in diagnostic or therapeutic procedures.

ENTPD5 Antibody (C-term) - Protein Information

Name ENTPD5 ([HGNC:3367](#))

Function Hydrolyzes nucleoside diphosphates with a preference for GDP, IDP and UDP compared to ADP and CDP (PubMed:[10400613](#), PubMed:[15698960](#)). In the lumen of the endoplasmic reticulum, hydrolyzes UDP that acts as an end-product feedback inhibitor of the UDP-Glc:glycoprotein glucosyltransferases. UMP can be transported back by an UDP-sugar antiporter to the cytosol where it is consumed to regenerate UDP- glucose. Therefore, it positively regulates protein reglucosylation by clearing UDP from the ER lumen and by promoting the regeneration of UDP-glucose. Protein reglucosylation is essential to proper glycoprotein folding and quality control in the ER (By similarity).

Cellular Location

Endoplasmic reticulum {ECO:0000250|UniProtKB:Q9WUZ9}. Secreted

Tissue Location

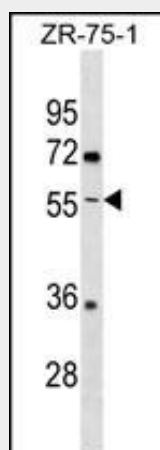
Expressed in adult liver, kidney, prostate, testis and colon. Much weaker expression in other tissues

ENTPD5 Antibody (C-term) - Protocols

Provided below are standard protocols that you may find useful for product applications.

- [Western Blot](#)
- [Blocking Peptides](#)
- [Dot Blot](#)
- [Immunohistochemistry](#)
- [Immunofluorescence](#)
- [Immunoprecipitation](#)
- [Flow Cytometry](#)
- [Cell Culture](#)

ENTPD5 Antibody (C-term) - Images



ENTPD5 Antibody (C-term)(Cat. #AP19295b) western blot analysis in ZR-75-1 cell line lysates (35ug/lane). This demonstrates the ENTPD5 antibody detected the ENTPD5 protein (arrow).

ENTPD5 Antibody (C-term) - Background

The protein encoded by this gene is similar to E-type nucleotidases (NTPases)/ecto-ATPase/apyrases. NTPases, such as CD39, mediate catabolism of extracellular nucleotides. ENTPD5 contains 4 apyrase-conserved regions which is characteristic of

NTPases.

ENTPD5 Antibody (C-term) - References

- Fransen, K., et al. Hum. Mol. Genet. 19(17):3482-3488(2010)
Villar, J., et al. Cancer Res. 69(1):102-110(2009)
Villar, J., et al. Cancer Res. 67(22):10859-10868(2007)
Regadera, J., et al. Int. J. Oncol. 28(3):595-604(2006)
Liu, T., et al. J. Proteome Res. 4(6):2070-2080(2005)