

**RHPN2 Antibody (Center)**  
**Affinity Purified Rabbit Polyclonal Antibody (Pab)**  
**Catalog # AP19291C**

**Specification**

---

**RHPN2 Antibody (Center) - Product Information**

Application	WB,E
Primary Accession	<a href="#">O81UC4</a>
Other Accession	<a href="#">NP_149094.3</a>
Reactivity	Human
Host	Rabbit
Clonality	Polyclonal
Isotype	Rabbit IgG
Calculated MW	76993
Antigen Region	352-380

**RHPN2 Antibody (Center) - Additional Information**

**Gene ID** 85415

**Other Names**

Rhopilin-2, 76 kDa RhoB effector protein, GTP-Rho-binding protein 2, p76RBE, RHPN2

**Target/Specificity**

This RHPN2 antibody is generated from rabbits immunized with a KLH conjugated synthetic peptide between 352-380 amino acids from the Central region of human RHPN2.

**Dilution**

WB~~1:1000

**Format**

Purified polyclonal antibody supplied in PBS with 0.09% (W/V) sodium azide. This antibody is purified through a protein A column, followed by peptide affinity purification.

**Storage**

Maintain refrigerated at 2-8°C for up to 2 weeks. For long term storage store at -20°C in small aliquots to prevent freeze-thaw cycles.

**Precautions**

RHPN2 Antibody (Center) is for research use only and not for use in diagnostic or therapeutic procedures.

**RHPN2 Antibody (Center) - Protein Information**

**Name** RHPN2

**Function** Binds specifically to GTP-Rho. May function in a Rho pathway to limit stress fiber formation and/or increase the turnover of F-actin structures in the absence of high levels of RhoA

activity.

#### Cellular Location

Cytoplasm, perinuclear region

#### Tissue Location

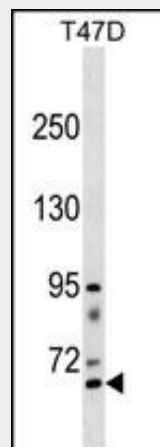
Widely expressed. Highly expressed in prostate, trachea, stomach, colon, thyroid and pancreas. Expressed at lower level in brain, spinal cord, kidney, placenta and liver

### RHPN2 Antibody (Center) - Protocols

Provided below are standard protocols that you may find useful for product applications.

- [Western Blot](#)
- [Blocking Peptides](#)
- [Dot Blot](#)
- [Immunohistochemistry](#)
- [Immunofluorescence](#)
- [Immunoprecipitation](#)
- [Flow Cytometry](#)
- [Cell Culture](#)

### RHPN2 Antibody (Center) - Images



RHPN2 Antibody (Center)(Cat. #AP19291c) western blot analysis in T47D cell line lysates (35ug/lane). This demonstrates the RHPN2 antibody detected the RHPN2 protein (arrow).

### RHPN2 Antibody (Center) - Background

This gene encodes a member of the rhopilin family of Ras-homologous (Rho)-GTPase binding proteins. The encoded protein binds both GTP- and GDP-bound RhoA and GTP-bound RhoB and may be involved in the organization of the actin cytoskeleton. [provided by RefSeq].

### RHPN2 Antibody (Center) - References

Abuli, A., et al. *Gastroenterology* 139(3):788-796(2010)  
von Holst, S., et al. *Br. J. Cancer* 103(4):575-580(2010)  
Kupfer, S.S., et al. *Gastroenterology* (2010) In press :

Xiong, F., et al. *Cancer Epidemiol. Biomarkers Prev.* 19(7):1855-1861(2010)  
Hawken, S.J., et al. *Hum. Genet.* 128(1):89-101(2010)