

**Mouse Sash1 Antibody (C-term)**  
**Affinity Purified Rabbit Polyclonal Antibody (Pab)**  
**Catalog # AP19222b**

## Specification

---

### Mouse Sash1 Antibody (C-term) - Product Information

Application	WB,E
Primary Accession	<a href="#">P59808</a>
Other Accession	<a href="#">NP_780364.3</a>
Reactivity	Mouse
Host	Rabbit
Clonality	Polyclonal
Isotype	Rabbit IgG
Calculated MW	135591
Antigen Region	870-896

### Mouse Sash1 Antibody (C-term) - Additional Information

**Gene ID** 70097

#### Other Names

SAM and SH3 domain-containing protein 1, Sash1

#### Target/Specificity

This Mouse Sash1 antibody is generated from rabbits immunized with a KLH conjugated synthetic peptide between 870-896 amino acids from the C-terminal region of mouse Sash1.

#### Dilution

WB~~1:1000

#### Format

Purified polyclonal antibody supplied in PBS with 0.09% (W/V) sodium azide. This antibody is purified through a protein A column, followed by peptide affinity purification.

#### Storage

Maintain refrigerated at 2-8°C for up to 2 weeks. For long term storage store at -20°C in small aliquots to prevent freeze-thaw cycles.

#### Precautions

Mouse Sash1 Antibody (C-term) is for research use only and not for use in diagnostic or therapeutic procedures.

### Mouse Sash1 Antibody (C-term) - Protein Information

**Name** Sash1

**Function** Is a positive regulator of NF-kappa-B signaling downstream of TLR4 activation. It acts as a scaffold molecule to assemble a molecular complex that includes TRAF6, MAP3K7, CHUK and

IKBKB, thereby facilitating NF-kappa-B signaling activation. Regulates TRAF6 and MAP3K7 ubiquitination. Involved in the regulation of cell mobility. Regulates lipopolysaccharide (LPS)-induced endothelial cell migration. Is involved in the regulation of skin pigmentation through the control of melanocyte migration in the epidermis.

#### Cellular Location

Cytoplasm {ECO:0000250|UniProtKB:O94885}.

#### Tissue Location

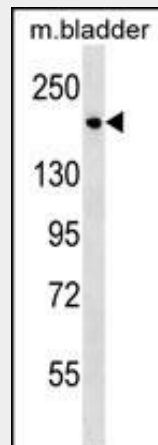
Expressed in the microvascular endothelium of various organs, as well as in parenchymal cells. Expressed in the endothelium but not lymphoid cells of spleen and thymus

### Mouse Sash1 Antibody (C-term) - Protocols

Provided below are standard protocols that you may find useful for product applications.

- [Western Blot](#)
- [Blocking Peptides](#)
- [Dot Blot](#)
- [Immunohistochemistry](#)
- [Immunofluorescence](#)
- [Immunoprecipitation](#)
- [Flow Cytometry](#)
- [Cell Culture](#)

### Mouse Sash1 Antibody (C-term) - Images



Mouse Sash1 Antibody (C-term) (Cat. #AP19222b) western blot analysis in mouse bladder tissue lysates (35ug/lane). This demonstrates the Sash1 antibody detected the Sash1 protein (arrow).

### Mouse Sash1 Antibody (C-term) - Background

Sash1 may have a role in a signaling pathway. Could act as a tumor suppressor.

### Mouse Sash1 Antibody (C-term) - References

- Trinidad, J.C., et al. Mol. Cell Proteomics 5(5):914-922(2006)  
Lindvall, J.M., et al. Cell. Immunol. 235(1):46-55(2005)  
Zambrowicz, B.P., et al. Proc. Natl. Acad. Sci. U.S.A. 100(24):14109-14114(2003)  
Okazaki, N., et al. DNA Res. 10(4):167-180(2003)

Carninci, P., et al. Genome Res. 13 (6B), 1273-1289 (2003) :