

SAMM50 Antibody (Center)
Affinity Purified Rabbit Polyclonal Antibody (Pab)
Catalog # AP19193C

Specification

SAMM50 Antibody (Center) - Product Information

Application	WB,E
Primary Accession	O9Y512
Other Accession	NP_056195.3
Reactivity	Human
Host	Rabbit
Clonality	Polyclonal
Isotype	Rabbit IgG
Calculated MW	51976
Antigen Region	163-189

SAMM50 Antibody (Center) - Additional Information

Gene ID 25813

Other Names

Sorting and assembly machinery component 50 homolog, Transformation-related gene 3 protein, TRG-3, SAMM50, SAM50

Target/Specificity

This SAMM50 antibody is generated from rabbits immunized with a KLH conjugated synthetic peptide between 163-189 amino acids from the Central region of human SAMM50.

Dilution

WB~~1:1000

Format

Purified polyclonal antibody supplied in PBS with 0.09% (W/V) sodium azide. This antibody is purified through a protein A column, followed by peptide affinity purification.

Storage

Maintain refrigerated at 2-8°C for up to 2 weeks. For long term storage store at -20°C in small aliquots to prevent freeze-thaw cycles.

Precautions

SAMM50 Antibody (Center) is for research use only and not for use in diagnostic or therapeutic procedures.

SAMM50 Antibody (Center) - Protein Information

Name SAMM50

Synonyms SAM50

Function Plays a crucial role in the maintenance of the structure of mitochondrial cristae and the proper assembly of the mitochondrial respiratory chain complexes (PubMed:[22252321](#), PubMed:[25781180](#)). Required for the assembly of TOMM40 into the TOM complex (PubMed:[15644312](#)).

Cellular Location

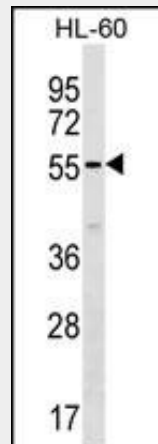
Mitochondrion outer membrane; Multi-pass membrane protein. Cytoplasm {ECO:0000250|UniProtKB:Q6AXV4}. Mitochondrion

SAMM50 Antibody (Center) - Protocols

Provided below are standard protocols that you may find useful for product applications.

- [Western Blot](#)
- [Blocking Peptides](#)
- [Dot Blot](#)
- [Immunohistochemistry](#)
- [Immunofluorescence](#)
- [Immunoprecipitation](#)
- [Flow Cytometry](#)
- [Cell Culture](#)

SAMM50 Antibody (Center) - Images



SAMM50 Antibody (Center) (Cat. #AP19193c) western blot analysis in HL-60 cell line lysates (35ug/lane). This demonstrates the SAMM50 antibody detected the SAMM50 protein (arrow).

SAMM50 Antibody (Center) - Background

SAMM50 is a component of the sorting and assembly machinery (SAM) complex of the outer mitochondrial membrane. The SAM complex has a role in integrating beta-barrel proteins into the outer mitochondrial membrane (Humphries et al., 2005 [PubMed 15644312]).

SAMM50 Antibody (Center) - References

Bailey, S.D., et al. Diabetes Care (2010) In press :
Rose, J.E., et al. Mol. Med. 16 (7-8), 247-253 (2010) :
Talmud, P.J., et al. Am. J. Hum. Genet. 85(5):628-642(2009)

Yuan, X., et al. Am. J. Hum. Genet. 83(4):520-528(2008)
Xie, J., et al. FEBS Lett. 581(18):3545-3549(2007)