

**JAKMIP2 Antibody (Center)**  
**Affinity Purified Rabbit Polyclonal Antibody (Pab)**  
**Catalog # AP19191c**

**Specification**

---

**JAKMIP2 Antibody (Center) - Product Information**

Application	WB,E
Primary Accession	<a href="#">O96AA8</a>
Other Accession	<a href="#">NP_055605.2</a>
Reactivity	Human
Host	Rabbit
Clonality	Polyclonal
Isotype	Rabbit IgG
Calculated MW	94934
Antigen Region	294-322

**JAKMIP2 Antibody (Center) - Additional Information**

**Gene ID** 9832

**Other Names**

Janus kinase and microtubule-interacting protein 2, CTCL tumor antigen HD-CL-04, Neuroendocrine long coiled-coil protein 1, JAKMIP2, JAMIP2, KIAA0555, NECC1

**Target/Specificity**

This JAKMIP2 antibody is generated from rabbits immunized with a KLH conjugated synthetic peptide between 294-322 amino acids from the Central region of human JAKMIP2.

**Dilution**

WB~~1:1000

**Format**

Purified polyclonal antibody supplied in PBS with 0.09% (W/V) sodium azide. This antibody is purified through a protein A column, followed by peptide affinity purification.

**Storage**

Maintain refrigerated at 2-8°C for up to 2 weeks. For long term storage store at -20°C in small aliquots to prevent freeze-thaw cycles.

**Precautions**

JAKMIP2 Antibody (Center) is for research use only and not for use in diagnostic or therapeutic procedures.

**JAKMIP2 Antibody (Center) - Protein Information**

**Name** JAKMIP2

**Synonyms** JAMIP2, KIAA0555, NECC1

**Cellular Location**

Golgi apparatus.

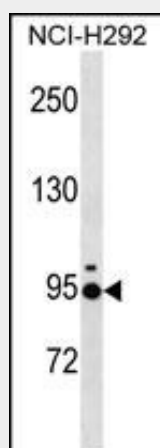
**Tissue Location**

Highly expressed in brain, moderately expressed in thymus, spleen and lung, and weakly expressed in kidney, liver and peripheral blood lymphocytes. Also expressed in adrenal and pituitary glands, as well as testis.

**JAKMIP2 Antibody (Center) - Protocols**

Provided below are standard protocols that you may find useful for product applications.

- [Western Blot](#)
- [Blocking Peptides](#)
- [Dot Blot](#)
- [Immunohistochemistry](#)
- [Immunofluorescence](#)
- [Immunoprecipitation](#)
- [Flow Cytometry](#)
- [Cell Culture](#)

**JAKMIP2 Antibody (Center) - Images**

JAKMIP2 Antibody (Center) (Cat. #AP19191c) western blot analysis in NCI-H292 cell line lysates (35ug/lane). This demonstrates the JAKMIP2 antibody detected the JAKMIP2 protein (arrow).

**JAKMIP2 Antibody (Center) - Background**

The function of this protein remains unknown.

**JAKMIP2 Antibody (Center) - References**

- Lennerz, J.K., et al. Hepatology 52(5):1855-1856(2010)  
Rose, J.E., et al. Mol. Med. 16 (7-8), 247-253 (2010) :  
Koskinen, L.L., et al. Tissue Antigens 74(5):408-416(2009)  
Cruz-Garcia, D., et al. FEBS Lett. 581(17):3149-3156(2007)  
Couve, A., et al. J. Biol. Chem. 279(14):13934-13943(2004)