

**BEST3 Antibody (N-term)**  
**Affinity Purified Rabbit Polyclonal Antibody (Pab)**  
**Catalog # AP19190a**

**Specification**

---

**BEST3 Antibody (N-term) - Product Information**

Application	WB,E
Primary Accession	<a href="#">O8N1M1</a>
Other Accession	<a href="#">NP_116124.2</a>
Reactivity	Human
Host	Rabbit
Clonality	Polyclonal
Isotype	Rabbit IgG
Calculated MW	76107
Antigen Region	40-68

**BEST3 Antibody (N-term) - Additional Information**

**Gene ID** 144453

**Other Names**

Bestrophin-3, Vitelliform macular dystrophy 2-like protein 3, BEST3, VMD2L3

**Target/Specificity**

This BEST3 antibody is generated from rabbits immunized with a KLH conjugated synthetic peptide between 40-68 amino acids from the N-terminal region of human BEST3.

**Dilution**

WB~~1:1000

**Format**

Purified polyclonal antibody supplied in PBS with 0.09% (W/V) sodium azide. This antibody is purified through a protein A column, followed by peptide affinity purification.

**Storage**

Maintain refrigerated at 2-8°C for up to 2 weeks. For long term storage store at -20°C in small aliquots to prevent freeze-thaw cycles.

**Precautions**

BEST3 Antibody (N-term) is for research use only and not for use in diagnostic or therapeutic procedures.

**BEST3 Antibody (N-term) - Protein Information**

**Name** BEST3 ([HGNC:17105](#))

**Function** Ligand-gated anion channel that allows the movement of chloride monoatomic anions across cell membranes when activated by calcium (Ca<sup>2+</sup>).

**Cellular Location**

Cell membrane; Multi-pass membrane protein.

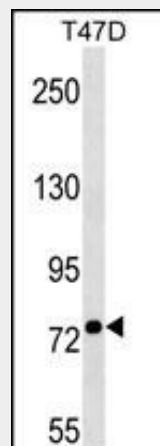
**Tissue Location**

Present in skeletal muscle and weakly in brain, spinal cord, bone marrow and retina.

**BEST3 Antibody (N-term) - Protocols**

Provided below are standard protocols that you may find useful for product applications.

- [Western Blot](#)
- [Blocking Peptides](#)
- [Dot Blot](#)
- [Immunohistochemistry](#)
- [Immunofluorescence](#)
- [Immunoprecipitation](#)
- [Flow Cytometry](#)
- [Cell Culture](#)

**BEST3 Antibody (N-term) - Images**

BEST3 Antibody (N-term) (Cat. #AP19190a) western blot analysis in T47D cell line lysates (35ug/lane). This demonstrates the BEST3 antibody detected the BEST3 protein (arrow).

**BEST3 Antibody (N-term) - Background**

BEST3 belongs to the bestrophin family of anion channels, which includes BEST1 (MIM 607854), the gene mutant in vitelliform macular dystrophy (VMD; MIM 153700), and 2 other BEST1-like genes, BEST2 (MIM 607335) and BEST4 (MIM 607336). Bestrophins are transmembrane (TM) proteins that share a homology region containing a high content of aromatic residues, including an invariant arg-phe-pro (RFP) motif. The bestrophin genes share a conserved gene structure, with almost identical sizes of the 8 RFP-TM domain-encoding exons and highly conserved exon-intron boundaries. Each of the 4 bestrophin genes has a unique 3-prime end of variable length (Stohr et al., 2002 [PubMed 12032738]; Tsunenari et al., 2003 [PubMed 12907679]).

**BEST3 Antibody (N-term) - References**

Marsey, L.L., et al. J. Physiol. (Lond.) 587 (PT 10), 2211-2224 (2009) :  
Qu, Z.Q., et al. J. Biol. Chem. 282(24):17460-17467(2007)  
Tsunenari, T., et al. J. Biol. Chem. 278(42):41114-41125(2003)  
Stohr, H., et al. Eur. J. Hum. Genet. 10(4):281-284(2002)  
Marquardt, A., et al. Hum. Mol. Genet. 7(9):1517-1525(1998)