

**RHOXF2B Antibody (Center)**  
**Affinity Purified Rabbit Polyclonal Antibody (Pab)**  
**Catalog # AP19180c**

**Specification**

---

**RHOXF2B Antibody (Center) - Product Information**

Application	IF, WB,E
Primary Accession	<a href="#">POC7M4</a>
Other Accession	<a href="#">O9BOY4</a> , <a href="#">NP_001093155.1</a>
Reactivity	Human
Host	Rabbit
Clonality	Polyclonal
Isotype	Rabbit IgG
Calculated MW	31637
Antigen Region	95-121

**RHOXF2B Antibody (Center) - Additional Information**

**Gene ID** 727940

**Other Names**

Rhox homeobox family member 2B, RHOXF2B

**Target/Specificity**

This RHOXF2B antibody is generated from rabbits immunized with a KLH conjugated synthetic peptide between 95-121 amino acids from the Central region of human RHOXF2B.

**Dilution**

IF~~1:10~50

WB~~1:1000

**Format**

Purified polyclonal antibody supplied in PBS with 0.09% (W/V) sodium azide. This antibody is purified through a protein A column, followed by peptide affinity purification.

**Storage**

Maintain refrigerated at 2-8°C for up to 2 weeks. For long term storage store at -20°C in small aliquots to prevent freeze-thaw cycles.

**Precautions**

RHOXF2B Antibody (Center) is for research use only and not for use in diagnostic or therapeutic procedures.

**RHOXF2B Antibody (Center) - Protein Information**

**Name** RHOXF2B ([HGNC:33519](#))

**Function** Transcription factor maybe involved in reproductive processes. Modulates expression of

target genes encoding proteins involved in processes relevant to spermatogenesis.

#### Cellular Location

Nucleus {ECO:0000255|PROSITE-ProRule:PRU00108}.

#### Tissue Location

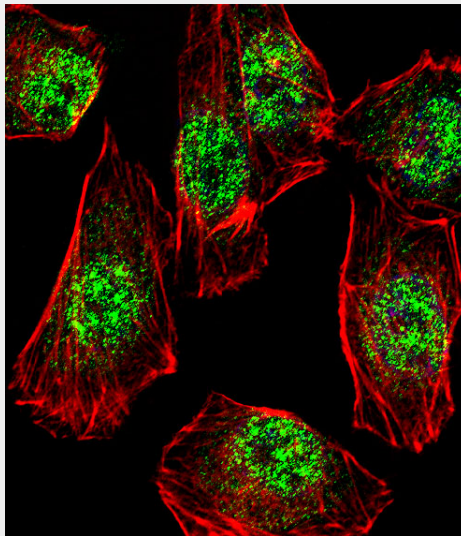
Expressed in testis, mainly expressed in germ cells, but also detected in somatic cells such as Sertoli cells, Leydig cells and peritubular cells.

### RHOXF2B Antibody (Center) - Protocols

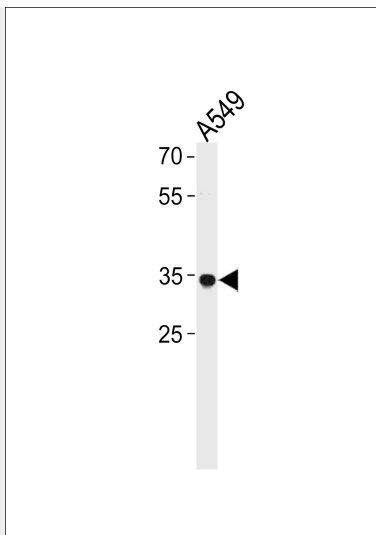
Provided below are standard protocols that you may find useful for product applications.

- [Western Blot](#)
- [Blocking Peptides](#)
- [Dot Blot](#)
- [Immunohistochemistry](#)
- [Immunofluorescence](#)
- [Immunoprecipitation](#)
- [Flow Cytometry](#)
- [Cell Culture](#)

### RHOXF2B Antibody (Center) - Images



Fluorescent confocal image of A549 cell stained with RHOXF2B Antibody (Center)(Cat#AP19180c).A549 cells were fixed with 4% PFA (20 min), permeabilized with Triton X-100 (0.1%, 10 min), then incubated with RHOXF2B primary antibody (1:25, 1 h at 37°C). For secondary antibody, Alexa Fluor® 488 conjugated donkey anti-rabbit antibody (green) was used (1:400, 50 min at 37°C).Cytoplasmic actin was counterstained with Alexa Fluor® 555 (red) conjugated Phalloidin (7units/ml, 1 h at 37°C). Nuclei were counterstained with DAPI (blue) (10 µg/ml, 10 min).RHOXF2B immunoreactivity is localized to Nucleus significantly.



RHOXF2B Antibody (Center) (Cat. #AP19180c) western blot analysis in A549 cell line lysates (35ug/lane). This demonstrates the RHOXF2B antibody detected the RHOXF2B protein (arrow).

#### **RHOXF2B Antibody (Center) - Background**

The function of this protein remains unknown.