

RETNLB Antibody (Center)
Affinity Purified Rabbit Polyclonal Antibody (Pab)
Catalog # AP19178c**Specification**

RETNLB Antibody (Center) - Product Information

Application	WB,E
Primary Accession	O9BQ08
Other Accession	NP_115968.1
Reactivity	Human
Host	Rabbit
Clonality	Polyclonal
Isotype	Rabbit IgG
Calculated MW	11730
Antigen Region	27-52

RETNLB Antibody (Center) - Additional Information**Gene ID** 84666**Other Names**

Resistin-like beta, Colon and small intestine-specific cysteine-rich protein, Colon carcinoma-related gene protein, Cysteine-rich secreted protein A12-alpha-like 1, Cysteine-rich secreted protein FIZZ2, RELMbeta, RETNLB, CCRG, FIZZ2, HXCP2, RETNL2

Target/Specificity

This RETNLB antibody is generated from rabbits immunized with a KLH conjugated synthetic peptide between 27-52 amino acids from the Central region of human RETNLB.

Dilution

WB~~1:1000

Format

Purified polyclonal antibody supplied in PBS with 0.09% (W/V) sodium azide. This antibody is purified through a protein A column, followed by peptide affinity purification.

Storage

Maintain refrigerated at 2-8°C for up to 2 weeks. For long term storage store at -20°C in small aliquots to prevent freeze-thaw cycles.

Precautions

RETNLB Antibody (Center) is for research use only and not for use in diagnostic or therapeutic procedures.

RETNLB Antibody (Center) - Protein Information**Name** RETNLB

Synonyms CCRG, FIZZ2, HXCP2, RETNL2

Function Probable hormone.

Cellular Location
Secreted.

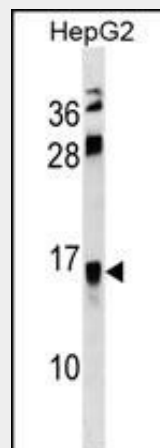
Tissue Location
Expressed only in the gastrointestinal tract, particularly the colon

RETNLB Antibody (Center) - Protocols

Provided below are standard protocols that you may find useful for product applications.

- [Western Blot](#)
- [Blocking Peptides](#)
- [Dot Blot](#)
- [Immunohistochemistry](#)
- [Immunofluorescence](#)
- [Immunoprecipitation](#)
- [Flow Cytometry](#)
- [Cell Culture](#)

RETNLB Antibody (Center) - Images



RETNLB Antibody (Center) (Cat. #AP19178c) western blot analysis in HepG2 cell line lysates (35ug/lane). This demonstrates the RETNLB antibody detected the RETNLB protein (arrow).

RETNLB Antibody (Center) - Background

RETNLB is probable hormone.

RETNLB Antibody (Center) - References

- Zheng, L., et al. Virchows Arch. 456(1):53-63(2010)
Angelini, D.J., et al. Am. J. Respir. Cell Mol. Biol. 41(5):553-561(2009)
Zheng, L.D., et al. Dig. Dis. Sci. 54(2):274-281(2009)
Renigunta, A., et al. FEBS Lett. 580(3):900-903(2006)
Chumakov, A.M., et al. Oncogene 23(19):3414-3425(2004)

RETNLB Antibody (Center) - Citations

- [Resistin-like molecule \$\beta\$ acts as a mitogenic factor in hypoxic pulmonary hypertension via the Ca²⁺-dependent PI3K/Akt/mTOR and PKC/MAPK signaling pathways](#)