

RHCG Antibody (Center)
Affinity Purified Rabbit Polyclonal Antibody (Pab)
Catalog # AP19157c**Specification**

RHCG Antibody (Center) - Product Information

Application	WB,E
Primary Accession	O9UBD6
Other Accession	NP_057405.1
Reactivity	Human, Mouse
Host	Rabbit
Clonality	Polyclonal
Isotype	Rabbit IgG
Calculated MW	53179
Antigen Region	184-213

RHCG Antibody (Center) - Additional Information**Gene ID** 51458**Other Names**

Ammonium transporter Rh type C, Rh glycoprotein kidney, Rhesus blood group family type C glycoprotein, Rh family type C glycoprotein, Rh type C glycoprotein, Tumor-related protein DRC2, RHCG, C15orf6, CDRC2, PDRC2, RHGK

Target/Specificity

This RHCG antibody is generated from rabbits immunized with a KLH conjugated synthetic peptide between 184-213 amino acids from the Central region of human RHCG.

Dilution

WB~~1:1000

Format

Purified polyclonal antibody supplied in PBS with 0.09% (W/V) sodium azide. This antibody is purified through a protein A column, followed by peptide affinity purification.

Storage

Maintain refrigerated at 2-8°C for up to 2 weeks. For long term storage store at -20°C in small aliquots to prevent freeze-thaw cycles.

Precautions

RHCG Antibody (Center) is for research use only and not for use in diagnostic or therapeutic procedures.

RHCG Antibody (Center) - Protein Information**Name** RHCG

Synonyms C15orf6, CDRC2, PDRC2, RHGK

Function Ammonium transporter involved in the maintenance of acid-base homeostasis. Transports ammonium and its related derivative methylammonium across the plasma membrane of epithelial cells likely contributing to renal transepithelial ammonia transport and ammonia metabolism. Postulated to primarily mediate an electroneutral bidirectional transport of NH₃ ammonia species according to a mechanism that implies interaction of an NH₄(+) ion with acidic residues of the pore entry followed by dissociation of NH₄(+) into NH₃ and H(+). As a result NH₃ transits through the central pore and is protonated on the extracellular side reforming NH₄(+) (PubMed:[11062476](#), PubMed:[14761968](#), PubMed:[15929723](#), PubMed:[16477434](#), PubMed:[16580862](#), PubMed:[24077989](#)). May act as a CO₂ channel providing for renal acid secretion (PubMed:[24077989](#)).

Cellular Location

Cell membrane; Multi-pass membrane protein. Apical cell membrane; Multi-pass membrane protein. Note=Also detected at the basolateral membrane and in subapical vesicles.

Tissue Location

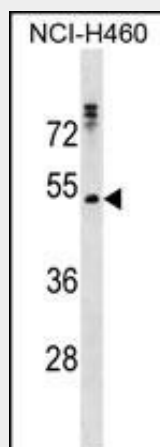
Expressed in brain, testis, placenta, pancreas, esophagus and prostate. Expressed in squamous epithelial tissues (at protein level). Expressed in kidney.

RHCG Antibody (Center) - Protocols

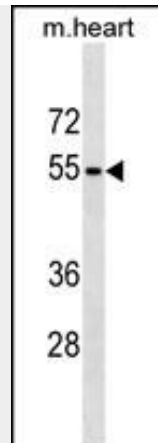
Provided below are standard protocols that you may find useful for product applications.

- [Western Blot](#)
- [Blocking Peptides](#)
- [Dot Blot](#)
- [Immunohistochemistry](#)
- [Immunofluorescence](#)
- [Immunoprecipitation](#)
- [Flow Cytometry](#)
- [Cell Culture](#)

RHCG Antibody (Center) - Images



RHCG Antibody (Center) (Cat. #AP19157c) western blot analysis in NCI-H460 cell line lysates (35ug/lane). This demonstrates the RHCG antibody detected the RHCG protein (arrow).



RHCG Antibody (Center) (Cat. #AP19157c) western blot analysis in mouse heart tissue lysates (35ug/lane). This demonstrates the RHCG antibody detected the RHCG protein (arrow).

RHCG Antibody (Center) - Background

RHCG functions as an electroneutral and bidirectional ammonium transporter. May regulate transepithelial ammonia secretion.

RHCG Antibody (Center) - References

- Bailey, S.D., et al. Diabetes Care 33(10):2250-2253(2010)
- Gruswitz, F., et al. Proc. Natl. Acad. Sci. U.S.A. 107(21):9638-9643(2010)
- Mouro-Chanteloup, I., et al. PLoS ONE 5 (1), E8921 (2010) :
- Talmud, P.J., et al. Am. J. Hum. Genet. 85(5):628-642(2009)
- Han, K.H., et al. Am. J. Physiol. Lung Cell Mol. Physiol. 297 (1), L153-L163 (2009) :