

**PRKCSH Antibody (N-term)**  
**Affinity Purified Rabbit Polyclonal Antibody (Pab)**  
**Catalog # AP19155a**

**Specification**

---

**PRKCSH Antibody (N-term) - Product Information**

Application	WB,E
Primary Accession	<a href="#">P14314</a>
Other Accession	<a href="#">Q28034</a> , <a href="#">NP_002734.2</a>
Reactivity	Human
Predicted	Bovine
Host	Rabbit
Clonality	Polyclonal
Isotype	Rabbit IgG
Calculated MW	59425
Antigen Region	6-35

**PRKCSH Antibody (N-term) - Additional Information**

**Gene ID** 5589

**Other Names**

Glucosidase 2 subunit beta, 80K-H protein, Glucosidase II subunit beta, Protein kinase C substrate 601 kDa protein heavy chain, PKCSH, PRKCSH, G19P1

**Target/Specificity**

This PRKCSH antibody is generated from rabbits immunized with a KLH conjugated synthetic peptide between 6-35 amino acids from the N-terminal region of human PRKCSH.

**Dilution**

WB~~1:1000

**Format**

Purified polyclonal antibody supplied in PBS with 0.09% (W/V) sodium azide. This antibody is purified through a protein A column, followed by peptide affinity purification.

**Storage**

Maintain refrigerated at 2-8°C for up to 2 weeks. For long term storage store at -20°C in small aliquots to prevent freeze-thaw cycles.

**Precautions**

PRKCSH Antibody (N-term) is for research use only and not for use in diagnostic or therapeutic procedures.

**PRKCSH Antibody (N-term) - Protein Information**

**Name** PRKCSH {ECO:0000303|PubMed:28375157, ECO:0000312|HGNC:HGNC:9411}

**Function** Regulatory subunit of glucosidase II that cleaves sequentially the 2 innermost alpha-1,3-linked glucose residues from the Glc(2)Man(9)GlcNAc(2) oligosaccharide precursor of immature glycoproteins (PubMed:[10929008](#)). Required for efficient PKD1/Polycystin-1 biogenesis and trafficking to the plasma membrane of the primary cilia (By similarity).

#### **Cellular Location**

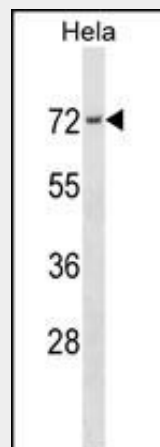
Endoplasmic reticulum {ECO:0000255|PROSITE- ProRule:PRU10138, ECO:0000305|PubMed:10929008}

#### **PRKCSH Antibody (N-term) - Protocols**

Provided below are standard protocols that you may find useful for product applications.

- [Western Blot](#)
- [Blocking Peptides](#)
- [Dot Blot](#)
- [Immunohistochemistry](#)
- [Immunofluorescence](#)
- [Immunoprecipitation](#)
- [Flow Cytometry](#)
- [Cell Culture](#)

#### **PRKCSH Antibody (N-term) - Images**



PRKCSH Antibody (N-term) (Cat. #AP19155a) western blot analysis in HeLa cell line lysates (35ug/lane). This demonstrates the PRKCSH antibody detected the PRKCSH protein (arrow).

#### **PRKCSH Antibody (N-term) - Background**

This gene encodes the beta-subunit of glucosidase II, an N-linked glycan-processing enzyme in the endoplasmic reticulum (ER). This protein is an acidic phospho-protein known to be a substrate for protein kinase C. Mutations in this gene have been associated with the autosomal dominant polycystic liver disease (PCLD). Alternatively spliced transcript variants encoding distinct isoforms have been observed.

#### **PRKCSH Antibody (N-term) - References**

Hoverfelt, A., et al. Diabetologia 53(9):1903-1907(2010)

Waanders, E., et al. Clin. Genet. 78(1):47-56(2010)  
van Keimpema, L., et al. Liver Int. (2010) In press :  
Yang, A.M., et al. Dig. Dis. Sci. 55(3):815-819(2010)  
Gao, H., et al. Hum. Mol. Genet. 19(1):16-24(2010)