

**BLACE Antibody (N-term)**  
**Affinity Purified Rabbit Polyclonal Antibody (Pab)**  
**Catalog # AP19140a****Specification**

---

**BLACE Antibody (N-term) - Product Information**

Application	WB,E
Primary Accession	<a href="#">A4D250</a>
Reactivity	Human
Host	Rabbit
Clonality	Polyclonal
Isotype	Rabbit IgG
Calculated MW	19503
Antigen Region	15-41

**BLACE Antibody (N-term) - Additional Information****Other Names**

B-cell acute lymphoblastic leukemia-expressed protein, BLACE

**Target/Specificity**

This BLACE antibody is generated from rabbits immunized with a KLH conjugated synthetic peptide between 15-41 amino acids from the N-terminal region of human BLACE.

**Dilution**

WB~~1:1000

**Format**

Purified polyclonal antibody supplied in PBS with 0.09% (W/V) sodium azide. This antibody is purified through a protein A column, followed by peptide affinity purification.

**Storage**

Maintain refrigerated at 2-8°C for up to 2 weeks. For long term storage store at -20°C in small aliquots to prevent freeze-thaw cycles.

**Precautions**

BLACE Antibody (N-term) is for research use only and not for use in diagnostic or therapeutic procedures.

**BLACE Antibody (N-term) - Protein Information**

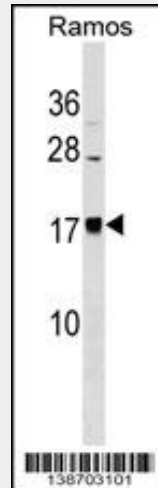
**Name** BLACE

**BLACE Antibody (N-term) - Protocols**

Provided below are standard protocols that you may find useful for product applications.

- [Western Blot](#)
- [Blocking Peptides](#)
- [Dot Blot](#)
- [Immunohistochemistry](#)
- [Immunofluorescence](#)
- [Immunoprecipitation](#)
- [Flow Cytometry](#)
- [Cell Culture](#)

#### **BLACE Antibody (N-term) - Images**



BLACE Antibody (N-term) (Cat. #AP19140a) western blot analysis in Ramos cell line lysates (35ug/lane). This demonstrates the BLACE antibody detected the BLACE protein (arrow).

#### **BLACE Antibody (N-term) - Background**

The function of this protein remains unknown.