

GAGE12F / GAGE12G / GAGE12I Antibody (N-term)
Affinity Purified Rabbit Polyclonal Antibody (Pab)
Catalog # AP19127a**Specification****GAGE12F / GAGE12G / GAGE12I Antibody (N-term) - Product Information**

Application	WB,E
Primary Accession	POCL80
Other Accession	POCL82 , A6NDE8 , POCL81 , A1L429 , O76087 , O13070 , O13069 , O13068 , O13067 , O13065 , NP_001091875.1
Reactivity	Human
Host	Rabbit
Clonality	Polyclonal
Isotype	Rabbit IgG
Calculated MW	12978
Antigen Region	1-30

GAGE12F / GAGE12G / GAGE12I Antibody (N-term) - Additional Information

Gene ID 100008586;2579;26748;645073

Other Names

G antigen 12F, GAGE-12F, GAGE12F

Target/Specificity

This GAGE12F / GAGE12G / GAGE12I antibody is generated from rabbits immunized with a KLH conjugated synthetic peptide between 1-30 amino acids from the N-terminal region of human GAGE12F / GAGE12G / GAGE12I.

Dilution

WB~~1:1000

Format

Purified polyclonal antibody supplied in PBS with 0.09% (W/V) sodium azide. This antibody is purified through a protein A column, followed by peptide affinity purification.

Storage

Maintain refrigerated at 2-8°C for up to 2 weeks. For long term storage store at -20°C in small aliquots to prevent freeze-thaw cycles.

Precautions

GAGE12F / GAGE12G / GAGE12I Antibody (N-term) is for research use only and not for use in diagnostic or therapeutic procedures.

GAGE12F / GAGE12G / GAGE12I Antibody (N-term) - Protein Information

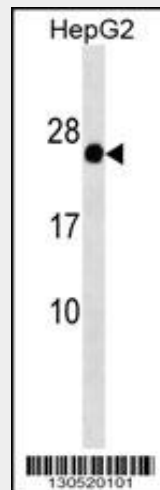
Name GAGE12F

GAGE12F / GAGE12G / GAGE12I Antibody (N-term) - Protocols

Provided below are standard protocols that you may find useful for product applications.

- [Western Blot](#)
- [Blocking Peptides](#)
- [Dot Blot](#)
- [Immunohistochemistry](#)
- [Immunofluorescence](#)
- [Immunoprecipitation](#)
- [Flow Cytometry](#)
- [Cell Culture](#)

GAGE12F / GAGE12G / GAGE12I Antibody (N-term) - Images



GAGE12F/GAGE12G/GAGE12I Antibody (N-term) (Cat. #AP19127a) western blot analysis in HepG2 cell line lysates (35ug/lane). This demonstrates the GAGE12F/GAGE12G/GAGE12I antibody detected the GAGE12F/GAGE12G/GAGE12I protein (arrow).

GAGE12F / GAGE12G / GAGE12I Antibody (N-term) - Background

The function of this protein remains unknown.

GAGE12F / GAGE12G / GAGE12I Antibody (N-term) - References

Gjerstorff, M.F., et al. Tissue Antigens 71(3):187-192(2008)