

**UBAP2L Antibody (Center)**  
**Affinity Purified Rabbit Polyclonal Antibody (Pab)**  
**Catalog # AP19097c**

**Specification**

---

**UBAP2L Antibody (Center) - Product Information**

Application	WB,E
Primary Accession	<a href="#">O14157</a>
Other Accession	<a href="#">O80X50</a> , <a href="#">NP_001120792.1</a>
Reactivity	Human
Predicted	Mouse
Host	Rabbit
Clonality	Polyclonal
Isotype	Rabbit IgG
Calculated MW	114535
Antigen Region	575-601

**UBAP2L Antibody (Center) - Additional Information**

**Gene ID** 9898

**Other Names**

Ubiquitin-associated protein 2-like, Protein NICE-4, UBAP2L, KIAA0144, NICE4

**Target/Specificity**

This UBAP2L antibody is generated from rabbits immunized with a KLH conjugated synthetic peptide between 575-601 amino acids from the Central region of human UBAP2L.

**Dilution**

WB~~1:1000

**Format**

Purified polyclonal antibody supplied in PBS with 0.09% (W/V) sodium azide. This antibody is purified through a protein A column, followed by peptide affinity purification.

**Storage**

Maintain refrigerated at 2-8°C for up to 2 weeks. For long term storage store at -20°C in small aliquots to prevent freeze-thaw cycles.

**Precautions**

UBAP2L Antibody (Center) is for research use only and not for use in diagnostic or therapeutic procedures.

**UBAP2L Antibody (Center) - Protein Information**

**Name** UBAP2L ([HGNC:29877](#))

**Synonyms** KIAA0144, NICE4

**Function** Recruits the ubiquitination machinery to RNA polymerase II for polyubiquitination, removal and degradation, when the transcription-coupled nucleotide excision repair (TC-NER) machinery fails to resolve DNA damage (PubMed:[35633597](#)). Plays an important role in the activity of long-term repopulating hematopoietic stem cells (LT- HSCs) (By similarity). Is a regulator of stress granule assembly, required for their efficient formation (PubMed:[29395067](#), PubMed:[35977029](#)). Required for proper brain development and neocortex lamination (By similarity).

**Cellular Location**

Nucleus. Chromosome. Cytoplasm Cytoplasm, Stress granule Note=Associates with nuclear chromatin.

**Tissue Location**

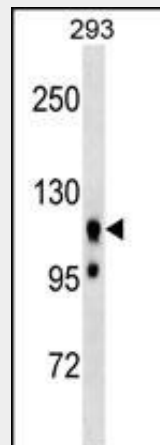
Ubiquitous..

**UBAP2L Antibody (Center) - Protocols**

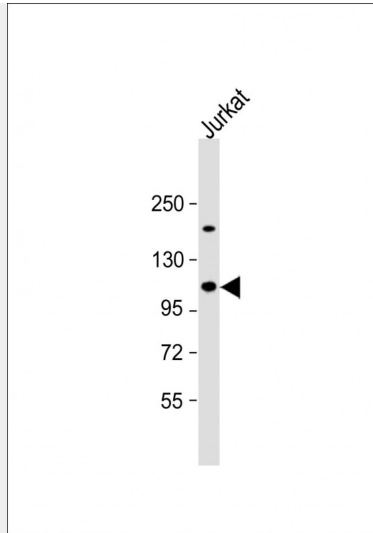
Provided below are standard protocols that you may find useful for product applications.

- [Western Blot](#)
- [Blocking Peptides](#)
- [Dot Blot](#)
- [Immunohistochemistry](#)
- [Immunofluorescence](#)
- [Immunoprecipitation](#)
- [Flow Cytometry](#)
- [Cell Culture](#)

**UBAP2L Antibody (Center) - Images**



UBAP2L Antibody (Center) (Cat. #AP19097c) western blot analysis in 293 cell line lysates (35ug/lane). This demonstrates the UBAP2L antibody detected the UBAP2L protein (arrow).



Anti-UBAP2L Antibody (Center) at 1:1000 dilution + Jurkat whole cell lysate Lysates/proteins at 20  $\mu$ g per lane. Secondary Goat Anti-Rabbit IgG, (H+L), Peroxidase conjugated at 1/10000 dilution. Predicted band size : 115 kDa Blocking/Dilution buffer: 5% NFDN/TBST.

#### **UBAP2L Antibody (Center) - Background**

UBAP2L contains 1 UBA domain and has 3 named isoforms. UBA domains are a commonly occurring sequence motif of approximately 45 amino acid residues that are found in diverse proteins involved in the ubiquitin/proteasome pathway, DNA excision-repair, and cell signalling via protein kinases. The function of this protein is not known.

#### **UBAP2L Antibody (Center) - References**

- Ichikawa, S., et al. J. Bone Miner. Res. 25(8):1821-1829(2010)
- Davila, S., et al. Genes Immun. 11(3):232-238(2010)
- Wang, Y.L., et al. J. Biol. Chem. 283(49):33808-33815(2008)
- Olsen, J.V., et al. Cell 127(3):635-648(2006)
- Beausoleil, S.A., et al. Nat. Biotechnol. 24(10):1285-1292(2006)