

AMMECR1 Antibody (C-term)
Affinity Purified Rabbit Polyclonal Antibody (Pab)
Catalog # AP19068b**Specification**

AMMECR1 Antibody (C-term) - Product Information

Application	WB,E
Primary Accession	O9Y4X0
Other Accession	O9JHT5 , NP_001020751.1
Reactivity	Human
Predicted	Mouse
Host	Rabbit
Clonality	Polyclonal
Isotype	Rabbit IgG
Calculated MW	35463
Antigen Region	271-298

AMMECR1 Antibody (C-term) - Additional Information**Gene ID** 9949**Other Names**

AMME syndrome candidate gene 1 protein, AMMECR1

Target/Specificity

This AMMECR1 antibody is generated from rabbits immunized with a KLH conjugated synthetic peptide between 271-298 amino acids from the C-terminal region of human AMMECR1.

Dilution

WB~~1:1000

Format

Purified polyclonal antibody supplied in PBS with 0.09% (W/V) sodium azide. This antibody is purified through a protein A column, followed by peptide affinity purification.

Storage

Maintain refrigerated at 2-8°C for up to 2 weeks. For long term storage store at -20°C in small aliquots to prevent freeze-thaw cycles.

Precautions

AMMECR1 Antibody (C-term) is for research use only and not for use in diagnostic or therapeutic procedures.

AMMECR1 Antibody (C-term) - Protein Information**Name** AMMECR1**Cellular Location**

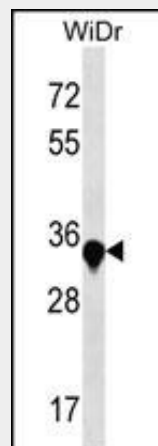
Nucleus.

AMMECR1 Antibody (C-term) - Protocols

Provided below are standard protocols that you may find useful for product applications.

- [Western Blot](#)
- [Blocking Peptides](#)
- [Dot Blot](#)
- [Immunohistochemistry](#)
- [Immunofluorescence](#)
- [Immunoprecipitation](#)
- [Flow Cytometry](#)
- [Cell Culture](#)

AMMECR1 Antibody (C-term) - Images



AMMECR1 Antibody (C-term) (Cat. #AP19068b) western blot analysis in WiDr cell line lysates (35ug/lane). This demonstrates the AMMECR1 antibody detected the AMMECR1 protein (arrow).

AMMECR1 Antibody (C-term) - Background

The exact function of this gene is not known, however, submicroscopic deletion of the X chromosome including this gene, COL4A5, and FAHL4 genes, result in a contiguous gene deletion syndrome, the AMME complex (Alport syndrome, mental retardation, midface hypoplasia, and elliptocytosis). Alternatively spliced transcript variants encoding different isoforms have been found for this gene.

AMMECR1 Antibody (C-term) - References

- Lamesch, P., et al. Genomics 89(3):307-315(2007)
Ross, M.T., et al. Nature 434(7031):325-337(2005)
Tajika, Y., et al. Proteins 58(2):501-503(2005)
Vitelli, F., et al. Genomics 55(3):335-340(1999)
Piccini, M., et al. Genomics 47(3):350-358(1998)