

TIMM50 Antibody (N-term)
Affinity Purified Rabbit Polyclonal Antibody (Pab)
Catalog # AP19064a

Specification

TIMM50 Antibody (N-term) - Product Information

Application	WB,E
Primary Accession	O3ZCQ8
Other Accession	NP_001001563.1
Reactivity	Human
Host	Rabbit
Clonality	Polyclonal
Isotype	Rabbit IgG
Calculated MW	39646
Antigen Region	74-104

TIMM50 Antibody (N-term) - Additional Information

Gene ID 92609

Other Names

Mitochondrial import inner membrane translocase subunit TIM50, TIMM50, TIM50

Target/Specificity

This TIMM50 antibody is generated from rabbits immunized with a KLH conjugated synthetic peptide between 74-104 amino acids from the N-terminal region of human TIMM50.

Dilution

WB~~1:1000

Format

Purified polyclonal antibody supplied in PBS with 0.09% (W/V) sodium azide. This antibody is purified through a protein A column, followed by peptide affinity purification.

Storage

Maintain refrigerated at 2-8°C for up to 2 weeks. For long term storage store at -20°C in small aliquots to prevent freeze-thaw cycles.

Precautions

TIMM50 Antibody (N-term) is for research use only and not for use in diagnostic or therapeutic procedures.

TIMM50 Antibody (N-term) - Protein Information

Name TIMM50

Synonyms TIM50

Function Essential component of the TIM23 complex, a complex that mediates the translocation of transit peptide-containing proteins across the mitochondrial inner membrane. Has some phosphatase activity in vitro; however such activity may not be relevant in vivo.

Cellular Location

Mitochondrion inner membrane; Single-pass membrane protein

Tissue Location

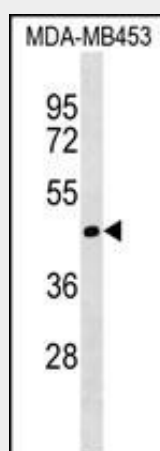
Widely expressed. Expressed at higher level in brain, kidney and liver (at protein level)

TIMM50 Antibody (N-term) - Protocols

Provided below are standard protocols that you may find useful for product applications.

- [Western Blot](#)
- [Blocking Peptides](#)
- [Dot Blot](#)
- [Immunohistochemistry](#)
- [Immunofluorescence](#)
- [Immunoprecipitation](#)
- [Flow Cytometry](#)
- [Cell Culture](#)

TIMM50 Antibody (N-term) - Images



TIMM50 Antibody (N-term) (Cat. #AP19064a) western blot analysis in MDA-MB453 cell line lysates (35ug/lane). This demonstrates the TIMM50 antibody detected the TIMM50 protein (arrow).

TIMM50 Antibody (N-term) - Background

Essential component of the TIM23 complex, a complex that mediates the translocation of transit peptide-containing proteins across the mitochondrial inner membrane. Has some phosphatase activity in vitro; however such activity may not be relevant in vivo. Isoform 2 may participate in the release of snRNPs and SMN from the Cajal body.

TIMM50 Antibody (N-term) - References

Ewing, R.M., et al. Mol. Syst. Biol. 3, 89 (2007) :
Xu, H., et al. BMC Cell Biol. 6 (1), 29 (2005) :
Guo, Y., et al. J. Biol. Chem. 279(23):24813-24825(2004)

Yuryev, A., et al. Genomics 81(2):112-125(2003)
Yamamoto, H., et al. Cell 111(4):519-528(2002)