

**ABI3BP Antibody (Center)**  
**Affinity Purified Rabbit Polyclonal Antibody (Pab)**  
**Catalog # AP19014c**

**Specification**

---

**ABI3BP Antibody (Center) - Product Information**

Application	WB,E
Primary Accession	<a href="#">O7Z7G0</a>
Other Accession	<a href="#">NP_056244.2</a>
Reactivity	Human
Host	Rabbit
Clonality	Polyclonal
Isotype	Rabbit IgG
Calculated MW	117895
Antigen Region	648-675

**ABI3BP Antibody (Center) - Additional Information**

**Gene ID** 25890

**Other Names**

Target of Nesh-SH3, Tarsh, ABI gene family member 3-binding protein, Nesh-binding protein, NeshBP, ABI3BP, NESHBP, TARSH

**Target/Specificity**

This ABI3BP antibody is generated from rabbits immunized with a KLH conjugated synthetic peptide between 648-675 amino acids from the Central region of human ABI3BP.

**Dilution**

WB~~1:1000

**Format**

Purified polyclonal antibody supplied in PBS with 0.09% (W/V) sodium azide. This antibody is purified through a protein A column, followed by peptide affinity purification.

**Storage**

Maintain refrigerated at 2-8°C for up to 2 weeks. For long term storage store at -20°C in small aliquots to prevent freeze-thaw cycles.

**Precautions**

ABI3BP Antibody (Center) is for research use only and not for use in diagnostic or therapeutic procedures.

**ABI3BP Antibody (Center) - Protein Information**

**Name** ABI3BP ([HGNC:17265](#))

**Synonyms** NESHBP, TARSH

**Cellular Location**

Secreted.

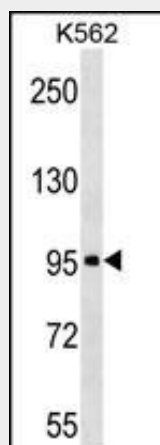
**Tissue Location**

Expressed in brain, heart, lung, liver, pancreas kidney and placenta.

**ABI3BP Antibody (Center) - Protocols**

Provided below are standard protocols that you may find useful for product applications.

- [Western Blot](#)
- [Blocking Peptides](#)
- [Dot Blot](#)
- [Immunohistochemistry](#)
- [Immunofluorescence](#)
- [Immunoprecipitation](#)
- [Flow Cytometry](#)
- [Cell Culture](#)

**ABI3BP Antibody (Center) - Images**

ABI3BP Antibody (Center) (Cat. #AP19014c) western blot analysis in K562 cell line lysates (35ug/lane). This demonstrates the ABI3BP antibody detected the ABI3BP protein (arrow).

**ABI3BP Antibody (Center) - Background**

The function of this protein remains unknown.

**ABI3BP Antibody (Center) - References**

- Trynka, G., et al. Gut 58(8):1078-1083(2009)  
Wakoh, T., et al. Biochem. Biophys. Res. Commun. 380(4):807-812(2009)  
Latini, F.R., et al. Endocr. Relat. Cancer 15(3):787-799(2008)  
Terauchi, K., et al. J. Cancer Res. Clin. Oncol. 132(1):28-34(2006)  
Uekawa, N., et al. Biochem. Biophys. Res. Commun. 329(3):1031-1038(2005)