

**MCCC2 Antibody (C-term)**  
**Affinity Purified Rabbit Polyclonal Antibody (Pab)**  
**Catalog # AP18978b**

**Specification**

---

**MCCC2 Antibody (C-term) - Product Information**

|                   |                             |
|-------------------|-----------------------------|
| Application       | WB,E                        |
| Primary Accession | <a href="#">O9HCC0</a>      |
| Other Accession   | <a href="#">NP_071415.1</a> |
| Reactivity        | Human                       |
| Host              | Rabbit                      |
| Clonality         | Polyclonal                  |
| Isotype           | Rabbit IgG                  |
| Calculated MW     | 61333                       |
| Antigen Region    | 468-496                     |

**MCCC2 Antibody (C-term) - Additional Information**

**Gene ID** 64087

**Other Names**

Methylcrotonoyl-CoA carboxylase beta chain, mitochondrial, MCCase subunit beta, 3-methylcrotonyl-CoA carboxylase 2, 3-methylcrotonyl-CoA carboxylase non-biotin-containing subunit, 3-methylcrotonyl-CoA:carbon dioxide ligase subunit beta, MCCC2, MCCB

**Target/Specificity**

This MCCC2 antibody is generated from rabbits immunized with a KLH conjugated synthetic peptide between 468-496 amino acids from the C-terminal region of human MCCC2.

**Dilution**

WB~~1:1000

**Format**

Purified polyclonal antibody supplied in PBS with 0.09% (W/V) sodium azide. This antibody is purified through a protein A column, followed by peptide affinity purification.

**Storage**

Maintain refrigerated at 2-8°C for up to 2 weeks. For long term storage store at -20°C in small aliquots to prevent freeze-thaw cycles.

**Precautions**

MCCC2 Antibody (C-term) is for research use only and not for use in diagnostic or therapeutic procedures.

**MCCC2 Antibody (C-term) - Protein Information**

**Name** MCCC2

## Synonyms MCCB

**Function** Carboxyltransferase subunit of the 3-methylcrotonyl-CoA carboxylase, an enzyme that catalyzes the conversion of 3- methylcrotonyl-CoA to 3-methylglutaconyl-CoA, a critical step for leucine and isovaleric acid catabolism.

## Cellular Location

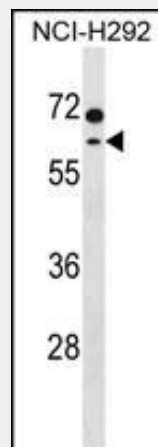
Mitochondrion matrix

## MCCC2 Antibody (C-term) - Protocols

Provided below are standard protocols that you may find useful for product applications.

- [Western Blot](#)
- [Blocking Peptides](#)
- [Dot Blot](#)
- [Immunohistochemistry](#)
- [Immunofluorescence](#)
- [Immunoprecipitation](#)
- [Flow Cytometry](#)
- [Cell Culture](#)

## MCCC2 Antibody (C-term) - Images



MCCC2 Antibody (C-term) (Cat. #AP18978b) western blot analysis in NCI-H292 cell line lysates (35ug/lane). This demonstrates the MCCC2 antibody detected the MCCC2 protein (arrow).

## MCCC2 Antibody (C-term) - Background

This gene encodes the small subunit of 3-methylcrotonyl-CoA carboxylase. This enzyme functions as a heterodimer and catalyzes the carboxylation of 3-methylcrotonyl-CoA to form 3-methylglutaconyl-CoA. Mutations in this gene are associated with 3-Methylcrotonylglycinuria, an autosomal recessive disorder of leucine catabolism.

## MCCC2 Antibody (C-term) - References

Yoshida, T., et al. *Int. J. Mol. Med.* 25(4):649-656(2010) Oguri, M., et al. *Am. J. Hypertens.* 23(1):70-77(2010) Cho, Y.S., et al. *Proteins* 70(1):268-272(2008) Uematsu, M., et al. *J. Hum. Genet.* 52(12):1040-1043(2007) Stadler, S.C., et al. *Biochem. Biophys. Res. Commun.* 334(3):939-946(2005)