

**SYTL4 Antibody (N-term)**  
**Affinity Purified Rabbit Polyclonal Antibody (Pab)**  
**Catalog # AP18969A**

**Specification**

---

**SYTL4 Antibody (N-term) - Product Information**

Application	WB,E
Primary Accession	<a href="#">O96C24</a>
Other Accession	<a href="#">NP_542775.2</a>
Reactivity	Human
Host	Rabbit
Clonality	Polyclonal
Isotype	Rabbit IgG
Calculated MW	76024
Antigen Region	5-34

**SYTL4 Antibody (N-term) - Additional Information**

**Gene ID** 94121

**Other Names**

Synaptotagmin-like protein 4, Exophilin-2, Granuphilin, SYTL4

**Target/Specificity**

This SYTL4 antibody is generated from rabbits immunized with a KLH conjugated synthetic peptide between 5-34 amino acids from the N-terminal region of human SYTL4.

**Dilution**

WB~~1:1000

**Format**

Purified polyclonal antibody supplied in PBS with 0.09% (W/V) sodium azide. This antibody is purified through a protein A column, followed by peptide affinity purification.

**Storage**

Maintain refrigerated at 2-8°C for up to 2 weeks. For long term storage store at -20°C in small aliquots to prevent freeze-thaw cycles.

**Precautions**

SYTL4 Antibody (N-term) is for research use only and not for use in diagnostic or therapeutic procedures.

**SYTL4 Antibody (N-term) - Protein Information**

**Name** SYTL4

**Function** Modulates exocytosis of dense-core granules and secretion of hormones in the pancreas and the pituitary. Interacts with vesicles containing negatively charged phospholipids in a

Ca(2+)-independent manner (By similarity).

#### Cellular Location

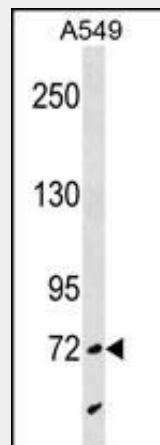
Membrane; Peripheral membrane protein. Cell membrane; Peripheral membrane protein. Cytoplasmic vesicle, secretory vesicle membrane; Peripheral membrane protein. Note=Detected close to the plasma membrane and on secretory granules. In pancreas, interacts with insulin-containing vesicles (By similarity)

#### SYTL4 Antibody (N-term) - Protocols

Provided below are standard protocols that you may find useful for product applications.

- [Western Blot](#)
- [Blocking Peptides](#)
- [Dot Blot](#)
- [Immunohistochemistry](#)
- [Immunofluorescence](#)
- [Immunoprecipitation](#)
- [Flow Cytometry](#)
- [Cell Culture](#)

#### SYTL4 Antibody (N-term) - Images



SYTL4 Antibody (N-term) (Cat. #AP18969a) western blot analysis in A549 cell line lysates (35ug/lane). This demonstrates the SYTL4 antibody detected the SYTL4 protein (arrow).

#### SYTL4 Antibody (N-term) - Background

This gene encodes a member of the synaptotagmin like protein family. Members of this family are characterized by an N-terminal Rab27 binding domain and C-terminal tandem C2 domains. The encoded protein binds specific small Rab GTPases and is involved in intracellular membrane trafficking. This protein binds Rab27 and may be involved in inhibiting dense core vesicle exocytosis. Alternate splicing results in multiple transcript variants that encode the same protein.

#### SYTL4 Antibody (N-term) - References

Plaisance, V., et al. J. Biol. Chem. 281(37):26932-26942(2006)

Ciufo, L.F., et al. Mol. Biol. Cell 16(2):470-482(2005)  
Fukuda, M. J. Biol. Chem. 278(17):15390-15396(2003)  
Fukuda, M., et al. J. Biol. Chem. 277(42):39673-39678(2002)  
Torii, S., et al. Mol. Cell. Biol. 22(15):5518-5526(2002)