

CLEC2D Antibody (Center)
Affinity Purified Rabbit Polyclonal Antibody (Pab)
Catalog # AP18951c

Specification

CLEC2D Antibody (Center) - Product Information

Application	WB,E
Primary Accession	O9UHP7
Other Accession	NP_001004419.1
Reactivity	Human
Host	Rabbit
Clonality	Polyclonal
Isotype	Rabbit IgG
Calculated MW	21849
Antigen Region	109-137

CLEC2D Antibody (Center) - Additional Information

Gene ID 29121

Other Names

C-type lectin domain family 2 member D, Lectin-like NK cell receptor, Lectin-like transcript 1, LLT-1, Osteoclast inhibitory lectin, CLEC2D, CLAX, LLT1, OCIL

Target/Specificity

This CLEC2D antibody is generated from rabbits immunized with a KLH conjugated synthetic peptide between 109-137 amino acids from the Central region of human CLEC2D.

Dilution

WB~~1:1000

Format

Purified polyclonal antibody supplied in PBS with 0.09% (W/V) sodium azide. This antibody is purified through a protein A column, followed by peptide affinity purification.

Storage

Maintain refrigerated at 2-8°C for up to 2 weeks. For long term storage store at -20°C in small aliquots to prevent freeze-thaw cycles.

Precautions

CLEC2D Antibody (Center) is for research use only and not for use in diagnostic or therapeutic procedures.

CLEC2D Antibody (Center) - Protein Information

Name CLEC2D

Synonyms CLAX, LLT1, OCIL

Function Receptor for KLRB1 that protects target cells against natural killer cell-mediated lysis (PubMed:[16339513](#), PubMed:[20843815](#)). Inhibits osteoclast formation (PubMed:[14753741](#), PubMed:[15123656](#)). Inhibits bone resorption (PubMed:[14753741](#)). Modulates the release of interferon-gamma (PubMed:[15104121](#)). Binds high molecular weight sulfated glycosaminoglycans (PubMed:[15123656](#)).

Cellular Location

Cell membrane; Single-pass type II membrane protein [Isoform 4]: Endoplasmic reticulum

Tissue Location

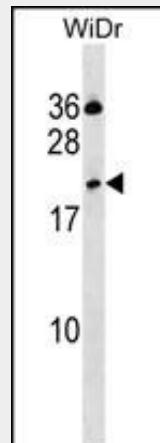
Detected in peripheral blood leukocytes, osteoblasts, lymph node, thymus and spleen. Isoform 1, isoform 2 and isoform 4 are expressed in T- and B-lymphocytes, and at lower levels in NK cells. They are also expressed in B-cell lines and LPS-matured monocyte-derived dendritic cells.

CLEC2D Antibody (Center) - Protocols

Provided below are standard protocols that you may find useful for product applications.

- [Western Blot](#)
- [Blocking Peptides](#)
- [Dot Blot](#)
- [Immunohistochemistry](#)
- [Immunofluorescence](#)
- [Immunoprecipitation](#)
- [Flow Cytometry](#)
- [Cell Culture](#)

CLEC2D Antibody (Center) - Images



CLEC2D Antibody (Center) (Cat. #AP18951c) western blot analysis in WiDr cell line lysates (35ug/lane). This demonstrates the CLEC2D antibody detected the CLEC2D protein (arrow).

CLEC2D Antibody (Center) - Background

This gene encodes a member of the natural killer cell receptor C-type lectin family. The encoded protein inhibits osteoclast formation and contains a transmembrane domain near the N-terminus as well as the C-type lectin-like extracellular domain. Several alternatively spliced transcript variants have been identified for this gene.

CLEC2D Antibody (Center) - References

- Germain, C., et al. J. Biol. Chem. (2010) In press :
Bambard, N.D., et al. Scand. J. Immunol. 71(3):210-219(2010)
Skinningsrud, B., et al. J. Clin. Endocrinol. Metab. 93(9):3310-3317(2008)
Rosen, D.B., et al. J. Immunol. 180(10):6508-6517(2008)
Pineda, B., et al. Calcif. Tissue Int. 82(5):348-353(2008)