

FLOT1 Antibody (N-term)
Affinity Purified Rabbit Polyclonal Antibody (Pab)
Catalog # AP18905a

Specification

FLOT1 Antibody (N-term) - Product Information

Application	WB,E
Primary Accession	O75955
Other Accession	O9Z1E1 , O767L6 , O08917 , O08DN8 , NP_005794.1
Reactivity	Human
Predicted	Bovine, Mouse, Pig, Rat
Host	Rabbit
Clonality	Polyclonal
Isotype	Rabbit IgG
Calculated MW	47355
Antigen Region	104-133

FLOT1 Antibody (N-term) - Additional Information

Gene ID 10211

Other Names
Flotillin-1, FLOT1

Target/Specificity

This FLOT1 antibody is generated from rabbits immunized with a KLH conjugated synthetic peptide between 104-133 amino acids from the N-terminal region of human FLOT1.

Dilution

WB~~1:1000

Format

Purified polyclonal antibody supplied in PBS with 0.09% (W/V) sodium azide. This antibody is purified through a protein A column, followed by peptide affinity purification.

Storage

Maintain refrigerated at 2-8°C for up to 2 weeks. For long term storage store at -20°C in small aliquots to prevent freeze-thaw cycles.

Precautions

FLOT1 Antibody (N-term) is for research use only and not for use in diagnostic or therapeutic procedures.

FLOT1 Antibody (N-term) - Protein Information

Name FLOT1

Function May act as a scaffolding protein within caveolar membranes, functionally participating in formation of caveolae or caveolae-like vesicles.

Cellular Location

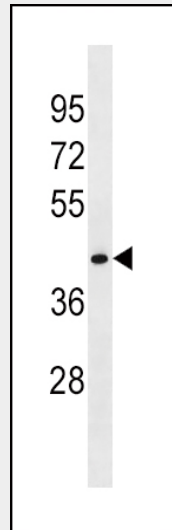
Cell membrane; Peripheral membrane protein. Endosome Membrane, caveola {ECO:0000250|UniProtKB:O08917}; Peripheral membrane protein {ECO:0000250|UniProtKB:O08917}. Melanosome. Membrane raft. Note=Identified by mass spectrometry in melanosome fractions from stage I to stage IV (PubMed:17081065) Membrane-associated protein of caveola (By similarity) {ECO:0000250|UniProtKB:O08917, ECO:0000269|PubMed:17081065}

FLOT1 Antibody (N-term) - Protocols

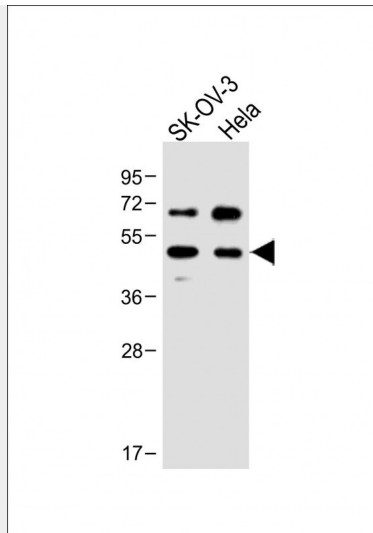
Provided below are standard protocols that you may find useful for product applications.

- [Western Blot](#)
- [Blocking Peptides](#)
- [Dot Blot](#)
- [Immunohistochemistry](#)
- [Immunofluorescence](#)
- [Immunoprecipitation](#)
- [Flow Cytometry](#)
- [Cell Culture](#)

FLOT1 Antibody (N-term) - Images



FLOT1 Antibody (N-term)(Cat. #AP18905a) western blot analysis in HepG2 cell line lysates (35ug/lane). This demonstrates the FLOT1 antibody detected the FLOT1 protein (arrow).



All lanes : Anti-FLOT1 Antibody (N-term) at 1:1000 dilution Lane 1: SK-OV-3 whole cell lysate Lane 2: HeLa whole cell lysate Lysates/proteins at 20 μ g per lane. Secondary Goat Anti-Rabbit IgG, (H+L), Peroxidase conjugated at 1/10000 dilution. Predicted band size : 47 kDa Blocking/Dilution buffer: 5% NFDN/TBST.

FLOT1 Antibody (N-term) - Background

Caveolae are small domains on the inner cell membrane involved in vesicular trafficking and signal transduction. FLOT1 encodes a caveolae-associated, integral membrane protein. The function of flotillin 1 has not been determined. [provided by RefSeq].

FLOT1 Antibody (N-term) - References

Lee, B.Y., et al. Mol. Cell Proteomics 9(1):32-53(2010)
Barcellos, L.F., et al. PLoS Genet. 5 (10), E1000696 (2009) :
Saalik, P., et al. Bioconjug. Chem. 20(5):877-887(2009)
Rajendran, L., et al. PLoS ONE 4 (12), E8290 (2009) :
Rossy, J., et al. PLoS ONE 4 (4), E5403 (2009) :