

ERBB2 Antibody (C-term S1054)
Affinity Purified Rabbit Polyclonal Antibody (Pab)
Catalog # AP18896b

Specification

ERBB2 Antibody (C-term S1054) - Product Information

Application	WB,E
Primary Accession	P04626
Other Accession	NP_001005862.1
Reactivity	Human
Host	Rabbit
Clonality	Polyclonal
Isotype	Rabbit IgG
Calculated MW	137910
Antigen Region	1032-1060

ERBB2 Antibody (C-term S1054) - Additional Information

Gene ID 2064

Other Names

Receptor tyrosine-protein kinase erbB-2, Metastatic lymph node gene 19 protein, MLN 19, Proto-oncogene Neu, Proto-oncogene c-ErbB-2, Tyrosine kinase-type cell surface receptor HER2, p185erbB2, CD340, ERBB2, HER2, MLN19, NEU, NGL

Target/Specificity

This ERBB2 antibody is generated from rabbits immunized with a KLH conjugated synthetic peptide between 1032-1060 amino acids from the C-terminal region of human ERBB2.

Dilution

WB~~1:8000

Format

Purified polyclonal antibody supplied in PBS with 0.09% (W/V) sodium azide. This antibody is purified through a protein A column, followed by peptide affinity purification.

Storage

Maintain refrigerated at 2-8°C for up to 2 weeks. For long term storage store at -20°C in small aliquots to prevent freeze-thaw cycles.

Precautions

ERBB2 Antibody (C-term S1054) is for research use only and not for use in diagnostic or therapeutic procedures.

ERBB2 Antibody (C-term S1054) - Protein Information

Name ERBB2

Synonyms HER2, MLN19, NEU, NGL

Function Protein tyrosine kinase that is part of several cell surface receptor complexes, but that apparently needs a coreceptor for ligand binding. Essential component of a neuregulin-receptor complex, although neuregulins do not interact with it alone. GP30 is a potential ligand for this receptor. Regulates outgrowth and stabilization of peripheral microtubules (MTs). Upon ERBB2 activation, the MEMO1-RHOA-DIAPH1 signaling pathway elicits the phosphorylation and thus the inhibition of GSK3B at cell membrane. This prevents the phosphorylation of APC and CLASP2, allowing its association with the cell membrane. In turn, membrane-bound APC allows the localization of MACF1 to the cell membrane, which is required for microtubule capture and stabilization.

Cellular Location

Cell membrane; Single-pass type I membrane protein. Cell projection, ruffle membrane; Single-pass type I membrane protein. Note=Internalized from the cell membrane in response to EGF stimulation. [Isoform 2]: Cytoplasm. Nucleus.

Tissue Location

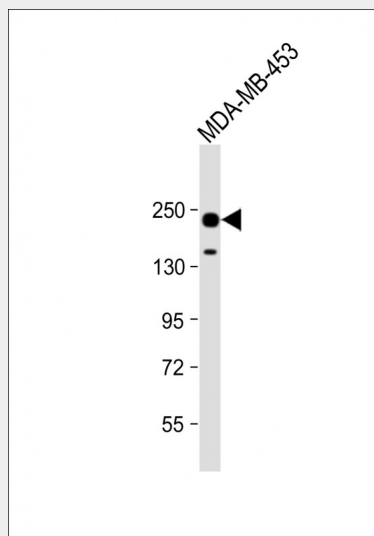
Expressed in a variety of tumor tissues including primary breast tumors and tumors from small bowel, esophagus, kidney and mouth.

ERBB2 Antibody (C-term S1054) - Protocols

Provided below are standard protocols that you may find useful for product applications.

- [Western Blot](#)
- [Blocking Peptides](#)
- [Dot Blot](#)
- [Immunohistochemistry](#)
- [Immunofluorescence](#)
- [Immunoprecipitation](#)
- [Flow Cytometry](#)
- [Cell Culture](#)

ERBB2 Antibody (C-term S1054) - Images



Anti-ERBB2 Antibody (S1054) at 1:8000 dilution + MDA-MB-453 whole cell lysate Lysates/proteins

at 20 µg per lane. Secondary Goat Anti-Rabbit IgG, (H+L), Peroxidase conjugated at 1/10000 dilution. Predicted band size : 138 kDa Blocking/Dilution buffer: 5% NFDm/TBST.

ERBB2 Antibody (C-term S1054) - Background

This gene encodes a member of the epidermal growth factor (EGF) receptor family of receptor tyrosine kinases. This protein has no ligand binding domain of its own and therefore cannot bind growth factors. However, it does bind tightly to other ligand-bound EGF receptor family members to form a heterodimer, stabilizing ligand binding and enhancing kinase-mediated activation of downstream signalling pathways, such as those involving mitogen-activated protein kinase and phosphatidylinositol-3 kinase. Allelic variations at amino acid positions 654 and 655 of isoform a (positions 624 and 625 of isoform b) have been reported, with the most common allele, Ile654/Ile655, shown here. Amplification and/or overexpression of this gene has been reported in numerous cancers, including breast and ovarian tumors. Alternative splicing results in several additional transcript variants, some encoding different isoforms and others that have not been fully characterized.

ERBB2 Antibody (C-term S1054) - References

Geradts, J., et al. Cancer Invest. 28(9):969-977(2010)
Zaoui, K., et al. Proc. Natl. Acad. Sci. U.S.A. 107(43):18517-18522(2010)
Oliveras, G., et al. Ann. N. Y. Acad. Sci. 1210, 86-92 (2010) :
Han, J.S., et al. Anticancer Res. 30(9):3407-3412(2010)
Stackievicz, R., et al. Isr. Med. Assoc. J. 12(5):290-295(2010)