

SCRIB Antibody (N-term)
Affinity Purified Rabbit Polyclonal Antibody (Pab)
Catalog # AP18837a

Specification

SCRIB Antibody (N-term) - Product Information

Application	WB,E
Primary Accession	Q14160
Other Accession	NP_874365.2
Reactivity	Human
Host	Rabbit
Clonality	Polyclonal
Isotype	Rabbit IgG
Calculated MW	177724
Antigen Region	382-410

SCRIB Antibody (N-term) - Additional Information

Gene ID 23513

Other Names

Protein scribble homolog, Scribble, hScrib, Protein LAP4, SCRIB, CRIB1, KIAA0147, LAP4, SCRB1, VARTUL

Target/Specificity

This SCRIB antibody is generated from rabbits immunized with a KLH conjugated synthetic peptide between 382-410 amino acids from the N-terminal region of human SCRIB.

Dilution

WB~~1:2000

Format

Purified polyclonal antibody supplied in PBS with 0.09% (W/V) sodium azide. This antibody is purified through a protein A column, followed by peptide affinity purification.

Storage

Maintain refrigerated at 2-8°C for up to 2 weeks. For long term storage store at -20°C in small aliquots to prevent freeze-thaw cycles.

Precautions

SCRIB Antibody (N-term) is for research use only and not for use in diagnostic or therapeutic procedures.

SCRIB Antibody (N-term) - Protein Information

Name SCRIB ([HGNC:30377](#))

Function Scaffold protein involved in different aspects of polarized cell differentiation regulating

epithelial and neuronal morphogenesis and T-cell polarization (PubMed:[15182672](#), PubMed:[16344308](#), PubMed:[16965391](#), PubMed:[18641685](#), PubMed:[18716323](#), PubMed:[19041750](#), PubMed:[27380321](#)). Via its interaction with CRTAM, required for the late phase polarization of a subset of CD4+ T-cells, which in turn regulates TCR-mediated proliferation and IFNG and IL22 production (By similarity). Plays a role in cell directional movement, cell orientation, cell sheet organization and Golgi complex polarization at the cell migration front (By similarity). Promotes epithelial cell layer barrier function via maintaining cell-cell adhesion (By similarity). Most probably functions in the establishment of apico- basal cell polarity (PubMed:[16344308](#), PubMed:[19041750](#)). May function in cell proliferation regulating progression from G1 to S phase and as a positive regulator of apoptosis for instance during acinar morphogenesis of the mammary epithelium (PubMed:[16965391](#), PubMed:[19041750](#)). May regulate cell invasion via MAPK-mediated cell migration and adhesion (PubMed:[18641685](#), PubMed:[18716323](#)). May play a role in exocytosis and in the targeting of synaptic vesicles to synapses (PubMed:[15182672](#)). Functions as an activator of Rac GTPase activity (PubMed:[15182672](#)).

Cellular Location

Cell membrane; Peripheral membrane protein. Cell junction. Cell junction, adherens junction. Cell projection, lamellipodium. Cytoplasm. Postsynapse. Presynapse. Note=Targeting to cell-cell junctions which is CDH1-dependent is required for the pro-apoptotic activity. In a subset of CD4+ T-cells, colocalizes with CRTAM at the immunological synapse during the late phase of T-cell activation (By similarity) Localized to small puncta throughout the cytoplasm and cell membrane when in the presence of SNAIL1 (By similarity). Localized along the length of perinuclear emanating vimentin bundles and at vimentin- positive fibrils at the cell periphery (PubMed:19386766). Localized to the lateral plasma membrane during the establishment and maturation of cell-cell contacts (PubMed:19386766) {ECO:0000250|UniProtKB:A0A8P0N4K0, ECO:0000250|UniProtKB:Q80U72, ECO:0000269|PubMed:19386766}

Tissue Location

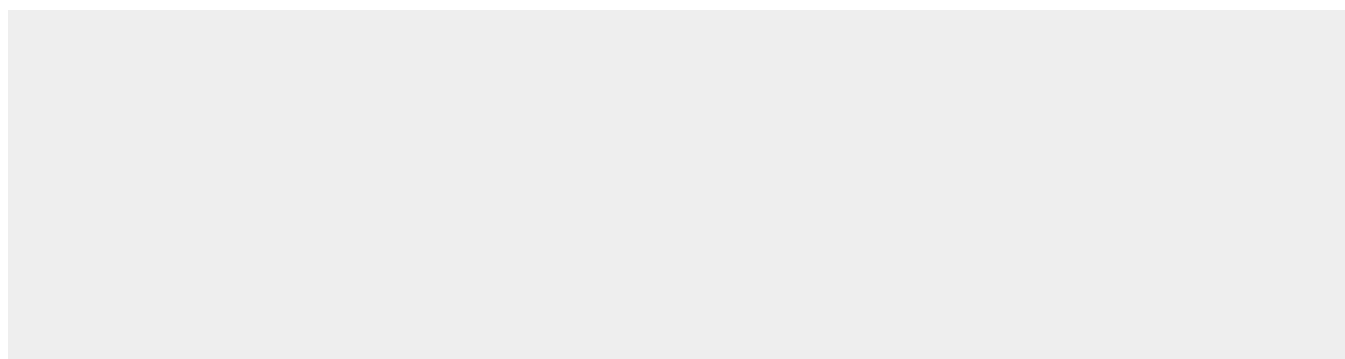
Expressed in kidney, skeletal muscles, liver, lung, breast, intestine, placenta and skin mainly in epithelial cells (at protein level).

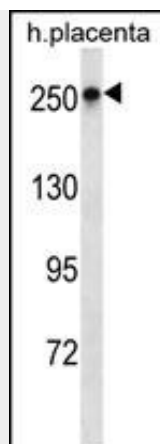
SCRIB Antibody (N-term) - Protocols

Provided below are standard protocols that you may find useful for product applications.

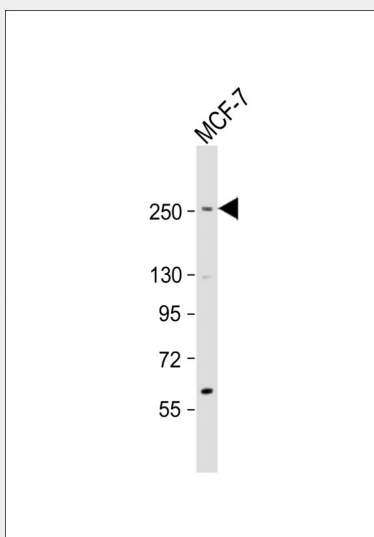
- [Western Blot](#)
- [Blocking Peptides](#)
- [Dot Blot](#)
- [Immunohistochemistry](#)
- [Immunofluorescence](#)
- [Immunoprecipitation](#)
- [Flow Cytometry](#)
- [Cell Culture](#)

SCRIB Antibody (N-term) - Images





SCRIB Antibody (N-term)(Cat. #AP18837a) western blot analysis in human placenta tissue lysates (35ug/lane). This demonstrates the SCRIB antibody detected the SCRIB protein (arrow).



Anti-SCRIB Antibody (N-term) at 1:2000 dilution + MCF-7 whole cell lysate Lysates/proteins at 20 µg per lane. Secondary Goat Anti-Rabbit IgG, (H+L), Peroxidase conjugated at 1/10000 dilution. Predicted band size : 175 kDa Blocking/Dilution buffer: 5% NFDM/TBST.

SCRIB Antibody (N-term) - Background

SCRIB is a cytoplasmic multimodular scaffold protein targeted to epithelial adherens junctions and neuronal presynaptic compartments. SCRIB and its orthologs in vertebrates and invertebrates participate in cell polarization (summary by Nola et al., 2008 [PubMed 18716323]).

SCRIB Antibody (N-term) - References

- Liu, H., et al. J. Virol. 84(21):11164-11174(2010)
- Nagasaka, K., et al. Oncogene 29(38):5311-5321(2010)
- Ivanov, A.I., et al. Am. J. Pathol. 176(1):134-145(2010)
- Ouyang, Z., et al. Oncol. Res. 18 (11-12), 593-599 (2010) :
- Arnaud, C., et al. FEBS Lett. 583(14):2326-2332(2009)