

DNASE1L1 Antibody (Center)
Affinity Purified Rabbit Polyclonal Antibody (Pab)
Catalog # AP18780c

Specification

DNASE1L1 Antibody (Center) - Product Information

Application	WB,E
Primary Accession	P49184
Other Accession	NP_001009932.1
Reactivity	Human
Host	Rabbit
Clonality	Polyclonal
Isotype	Rabbit IgG
Calculated MW	33893
Antigen Region	177-204

DNASE1L1 Antibody (Center) - Additional Information

Gene ID 1774

Other Names

Deoxyribonuclease-1-like 1, 3121-, DNase X, Deoxyribonuclease I-like 1, DNase I-like 1, Muscle-specific DNase I-like, XIB, DNASE1L1, DNAS1L1, DNL1L

Target/Specificity

This DNASE1L1 antibody is generated from rabbits immunized with a KLH conjugated synthetic peptide between 177-204 amino acids from the Central region of human DNASE1L1.

Dilution

WB~~1:1000

Format

Purified polyclonal antibody supplied in PBS with 0.09% (W/V) sodium azide. This antibody is purified through a protein A column, followed by peptide affinity purification.

Storage

Maintain refrigerated at 2-8°C for up to 2 weeks. For long term storage store at -20°C in small aliquots to prevent freeze-thaw cycles.

Precautions

DNASE1L1 Antibody (Center) is for research use only and not for use in diagnostic or therapeutic procedures.

DNASE1L1 Antibody (Center) - Protein Information

Name DNASE1L1

Synonyms DNAS1L1, DNL1L

Cellular Location

Endoplasmic reticulum

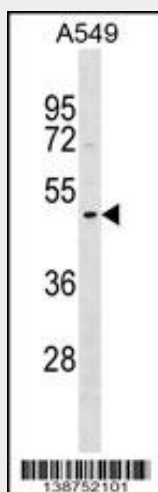
Tissue Location

Highest levels in skeletal and cardiac muscles. Detectable in all other tissues tested except brain

DNASE1L1 Antibody (Center) - Protocols

Provided below are standard protocols that you may find useful for product applications.

- [Western Blot](#)
- [Blocking Peptides](#)
- [Dot Blot](#)
- [Immunohistochemistry](#)
- [Immunofluorescence](#)
- [Immunoprecipitation](#)
- [Flow Cytometry](#)
- [Cell Culture](#)

DNASE1L1 Antibody (Center) - Images

DNASE1L1 Antibody (Center)(Cat. #AP18780c) western blot analysis in A549 cell line lysates (35ug/lane). This demonstrates the DNASE1L1 antibody detected the DNASE1L1 protein (arrow).

DNASE1L1 Antibody (Center) - Background

This gene encodes a member of the deoxyribonuclease family and the protein shows high sequence similarity to lysosomal DNase I. Alternate transcriptional splice variants, encoding the same protein, have been characterized.

DNASE1L1 Antibody (Center) - References

Bailey, S.D., et al. Diabetes Care (2010) In press :
Ueki, M., et al. Electrophoresis 31(12):2063-2069(2010)
Talmud, P.J., et al. Am. J. Hum. Genet. 85(5):628-642(2009)
Shiokawa, D., et al. Biochem. J. 392 (PT 3), 511-517 (2005) :
Malferrari, G., et al. Exp. Mol. Pathol. 66(2):123-130(1999)