

**TFDP3 Antibody (N-term)**  
**Affinity Purified Rabbit Polyclonal Antibody (Pab)**  
**Catalog # AP18725a**

**Specification**

---

**TFDP3 Antibody (N-term) - Product Information**

Application	WB,E
Primary Accession	<a href="#">Q5H9I0</a>
Other Accession	<a href="#">NP_057605.3</a>
Reactivity	Human
Host	Rabbit
Clonality	Polyclonal
Isotype	Rabbit IgG
Calculated MW	44967
Antigen Region	82-108

**TFDP3 Antibody (N-term) - Additional Information**

**Gene ID** 51270

**Other Names**

Transcription factor Dp family member 3, Cancer/testis antigen 30, CT30, Hepatocellular carcinoma-associated antigen 661, TFDP3, DP4, HCA661

**Target/Specificity**

This TFDP3 antibody is generated from rabbits immunized with a KLH conjugated synthetic peptide between 82-108 amino acids from the N-terminal region of human TFDP3.

**Dilution**

WB~~1:1000

**Format**

Purified polyclonal antibody supplied in PBS with 0.09% (W/V) sodium azide. This antibody is purified through a protein A column, followed by peptide affinity purification.

**Storage**

Maintain refrigerated at 2-8°C for up to 2 weeks. For long term storage store at -20°C in small aliquots to prevent freeze-thaw cycles.

**Precautions**

TFDP3 Antibody (N-term) is for research use only and not for use in diagnostic or therapeutic procedures.

**TFDP3 Antibody (N-term) - Protein Information**

**Name** TFDP3

**Synonyms** DP4, HCA661

**Function** Competitive inhibitor of E2F-mediated transactivation activity. Impairs E2F-mediated cell-cycle progression from G(1) to S phase.

**Cellular Location**

Nucleus. Cytoplasm. Note=Translocates to the nucleus on heterodimerization with E2F family members

**Tissue Location**

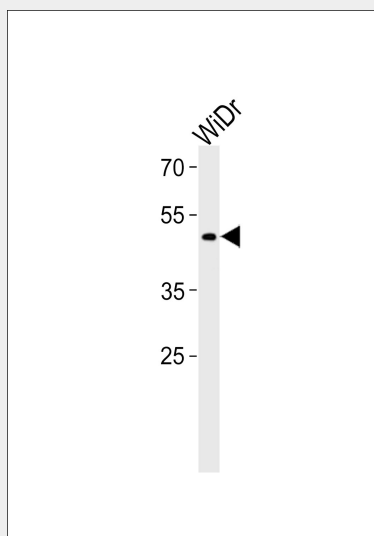
Predominantly expressed in testis. Low level of expression in pancreas. Highly expressed in ovarian and colon cancer cell lines.

**TFDP3 Antibody (N-term) - Protocols**

Provided below are standard protocols that you may find useful for product applications.

- [Western Blot](#)
- [Blocking Peptides](#)
- [Dot Blot](#)
- [Immunohistochemistry](#)
- [Immunofluorescence](#)
- [Immunoprecipitation](#)
- [Flow Cytometry](#)
- [Cell Culture](#)

**TFDP3 Antibody (N-term) - Images**



TFDP3 Antibody (N-term) (Cat. #AP18725a) western blot analysis in WiDr cell line lysates (35ug/lane). This demonstrates the TFDP3 antibody detected the TFDP3 protein (arrow).

**TFDP3 Antibody (N-term) - Background**

This gene encodes a member of the DP family of transcription factors. These factors heterodimerize with E2F proteins to enhance their DNA-binding activity and promote transcription from E2F target genes. This protein functions as a negative regulator and inhibits the DNA binding and transcriptional activities of E2F factors.

**TFDP3 Antibody (N-term) - References**

Tian, C., et al. Biochem. Biophys. Res. Commun. 361(1):20-25(2007)

Qiao, H., et al. J. Biol. Chem. 282(1):454-466(2007)

Milton, A., et al. Oncogene 25(22):3212-3218(2006)