

SSBP2 Antibody (N-term)
Affinity Purified Rabbit Polyclonal Antibody (Pab)
Catalog # AP18678a**Specification**

SSBP2 Antibody (N-term) - Product Information

Application	WB,E
Primary Accession	P81877
Other Accession	O9CZY8 , NP_036578.2
Reactivity	Human
Predicted	Mouse
Host	Rabbit
Clonality	Polyclonal
Isotype	Rabbit IgG
Calculated MW	37828
Antigen Region	1-30

SSBP2 Antibody (N-term) - Additional Information**Gene ID** 23635**Other Names**

Single-stranded DNA-binding protein 2, Sequence-specific single-stranded-DNA-binding protein 2, SSBP2, SSDP2

Target/Specificity

This SSBP2 antibody is generated from rabbits immunized with a KLH conjugated synthetic peptide between 1-30 amino acids from the N-terminal region of human SSBP2.

Dilution

WB~~1:1000

Format

Purified polyclonal antibody supplied in PBS with 0.09% (W/V) sodium azide. This antibody is purified through a protein A column, followed by peptide affinity purification.

Storage

Maintain refrigerated at 2-8°C for up to 2 weeks. For long term storage store at -20°C in small aliquots to prevent freeze-thaw cycles.

Precautions

SSBP2 Antibody (N-term) is for research use only and not for use in diagnostic or therapeutic procedures.

SSBP2 Antibody (N-term) - Protein Information**Name** SSBP2

Synonyms SSDP2

Cellular Location

Nucleus.

Tissue Location

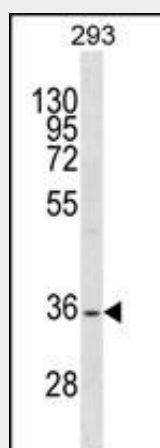
Ubiquitous..

SSBP2 Antibody (N-term) - Protocols

Provided below are standard protocols that you may find useful for product applications.

- [Western Blot](#)
- [Blocking Peptides](#)
- [Dot Blot](#)
- [Immunohistochemistry](#)
- [Immunofluorescence](#)
- [Immunoprecipitation](#)
- [Flow Cytometry](#)
- [Cell Culture](#)

SSBP2 Antibody (N-term) - Images



SSBP2 Antibody (N-term) (Cat. #AP18678a) western blot analysis in 293 cell line lysates (35ug/lane). This demonstrates the SSBP2 antibody detected the SSBP2 protein (arrow).

SSBP2 Antibody (N-term) - Background

SSBP2 is a subunit of a single-stranded DNA (ssDNA)-binding complex involved in the maintenance of genome stability (Huang et al., 2009) [PubMed 19683501]. [supplied by OMIM].

SSBP2 Antibody (N-term) - References

Rose, J.E., et al. Mol. Med. 16 (7-8), 247-253 (2010) :
Huang, J., et al. Mol. Cell 35(3):384-393(2009)
Kasyapa, C., et al. Proteomics 9(16):3979-3988(2009)
Poitras, J.L., et al. Genes Chromosomes Cancer 47(10):884-889(2008)
Liu, J.W., et al. Clin. Cancer Res. 14(12):3754-3760(2008)