

EMP3 Antibody (C-term)
Affinity Purified Rabbit Polyclonal Antibody (Pab)
Catalog # AP18662b

Specification

EMP3 Antibody (C-term) - Product Information

Application	WB,E
Primary Accession	P54852
Other Accession	NP_001416.1
Reactivity	Human
Host	Rabbit
Clonality	Polyclonal
Isotype	Rabbit IgG
Calculated MW	18429
Antigen Region	109-137

EMP3 Antibody (C-term) - Additional Information

Gene ID 2014

Other Names

Epithelial membrane protein 3, EMP-3, Hematopoietic neural membrane protein 1, HNMP-1, Protein YMP, EMP3, YMP

Target/Specificity

This EMP3 antibody is generated from rabbits immunized with a KLH conjugated synthetic peptide between 109-137 amino acids from the C-terminal region of human EMP3.

Dilution

WB~~1:1000

Format

Purified polyclonal antibody supplied in PBS with 0.09% (W/V) sodium azide. This antibody is purified through a protein A column, followed by peptide affinity purification.

Storage

Maintain refrigerated at 2-8°C for up to 2 weeks. For long term storage store at -20°C in small aliquots to prevent freeze-thaw cycles.

Precautions

EMP3 Antibody (C-term) is for research use only and not for use in diagnostic or therapeutic procedures.

EMP3 Antibody (C-term) - Protein Information

Name EMP3

Synonyms YMP

Function Probably involved in cell proliferation and cell-cell interactions.

Cellular Location

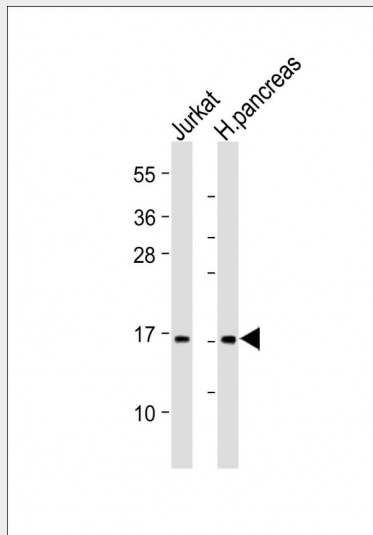
Membrane; Multi-pass membrane protein.

EMP3 Antibody (C-term) - Protocols

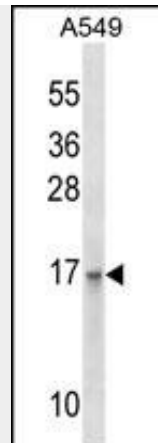
Provided below are standard protocols that you may find useful for product applications.

- [Western Blot](#)
- [Blocking Peptides](#)
- [Dot Blot](#)
- [Immunohistochemistry](#)
- [Immunofluorescence](#)
- [Immunoprecipitation](#)
- [Flow Cytometry](#)
- [Cell Culture](#)

EMP3 Antibody (C-term) - Images



All lanes : Anti-EMP3 Antibody (C-term) at 1:1000-1:2000 dilution Lane 1: Jurkat whole cell lysate Lane 2: Human pancreas lysate Lysates/proteins at 20 µg per lane. Secondary Goat Anti-Rabbit IgG, (H+L), Peroxidase conjugated at 1/10000 dilution. Predicted band size : 18 kDa Blocking/Dilution buffer: 5% NFDM/TBST.



EMP3 Antibody (C-term) (Cat. #AP18662b) western blot analysis in A549 cell line lysates (35ug/lane). This demonstrates the EMP3 antibody detected the EMP3 protein (arrow).

EMP3 Antibody (C-term) - Background

EMP3 is probably involved in cell proliferation and cell-cell interactions.

EMP3 Antibody (C-term) - References

- Fumoto, S., et al. *Cancer Lett.* 274(1):25-32(2009)
- Zhou, W., et al. *J. Korean Med. Sci.* 24(1):97-103(2009)
- Kunitz, A., et al. *Brain Pathol.* 17(4):363-370(2007)
- Li, K.K., et al. *Int. J. Cancer* 120(4):947-950(2007)
- Nielsen, K., et al. *Cornea* 24(6):661-668(2005)