

AEBP2 Antibody (C-term)
Affinity Purified Rabbit Polyclonal Antibody (Pab)
Catalog # AP18656b**Specification**

AEBP2 Antibody (C-term) - Product Information

Application	WB,E
Primary Accession	O6ZN18
Other Accession	A4FV57 , NP_001107648.1
Reactivity	Human
Predicted	Bovine
Host	Rabbit
Clonality	Polyclonal
Isotype	Rabbit IgG
Calculated MW	54467
Antigen Region	482-508

AEBP2 Antibody (C-term) - Additional Information**Gene ID** 121536**Other Names**

Zinc finger protein AEBP2, Adipocyte enhancer-binding protein 2, AE-binding protein 2, AEBP2

Target/Specificity

This AEBP2 antibody is generated from rabbits immunized with a KLH conjugated synthetic peptide between 482-508 amino acids from the C-terminal region of human AEBP2.

Dilution

WB~~1:1000

Format

Purified polyclonal antibody supplied in PBS with 0.09% (W/V) sodium azide. This antibody is purified through a protein A column, followed by peptide affinity purification.

Storage

Maintain refrigerated at 2-8°C for up to 2 weeks. For long term storage store at -20°C in small aliquots to prevent freeze-thaw cycles.

Precautions

AEBP2 Antibody (C-term) is for research use only and not for use in diagnostic or therapeutic procedures.

AEBP2 Antibody (C-term) - Protein Information**Name** AEBP2**Function** Acts as an accessory subunit for the core Polycomb repressive complex 2 (PRC2), which

mediates histone H3K27 (H3K27me3) trimethylation on chromatin leading to transcriptional repression of the affected target gene (PubMed:[15225548](#), PubMed:[29499137](#), PubMed:[31959557](#)). Plays a role in nucleosome localization of the PRC2 complex (PubMed:[29499137](#)).

Cellular Location

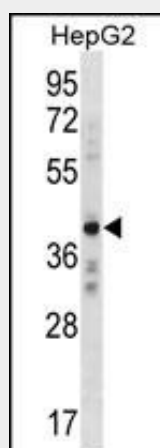
Nucleus. Note=Localizes to chromatin as part of the PRC2 complex

AEBP2 Antibody (C-term) - Protocols

Provided below are standard protocols that you may find useful for product applications.

- [Western Blot](#)
- [Blocking Peptides](#)
- [Dot Blot](#)
- [Immunohistochemistry](#)
- [Immunofluorescence](#)
- [Immunoprecipitation](#)
- [Flow Cytometry](#)
- [Cell Culture](#)

AEBP2 Antibody (C-term) - Images



AEBP2 Antibody (C-term) (Cat. #AP18656b) western blot analysis in HepG2 cell line lysates (35ug/lane). This demonstrates the AEBP2 antibody detected the AEBP2 protein (arrow).

AEBP2 Antibody (C-term) - Background

DNA-binding transcriptional repressor. AEBP2 may interact with and stimulate the activity of the PRC2 complex, which methylates 'Lys-9' and 'Lys-27' residues of histone H3.

AEBP2 Antibody (C-term) - References

Cao, R., et al. Mol. Cell 15(1):57-67(2004)
He, G.P., et al. J. Biol. Chem. 274(21):14678-14684(1999)