

PPIL4 Antibody (N-term)
Affinity Purified Rabbit Polyclonal Antibody (Pab)
Catalog # AP18625A

Specification

PPIL4 Antibody (N-term) - Product Information

Application	WB,E
Primary Accession	O8WUA2
Other Accession	O9CXG3 , NP_624311.1
Reactivity	Mouse
Host	Rabbit
Clonality	Polyclonal
Isotype	Rabbit IgG
Calculated MW	57225
Antigen Region	122-151

PPIL4 Antibody (N-term) - Additional Information

Gene ID 85313

Other Names

Peptidyl-prolyl cis-trans isomerase-like 4, PPIase, Cyclophilin-like protein PPIL4, Rotamase PPIL4, PPIL4

Target/Specificity

This PPIL4 antibody is generated from rabbits immunized with a KLH conjugated synthetic peptide between 122-151 amino acids from the N-terminal region of human PPIL4.

Dilution

WB~~1:1000

Format

Purified polyclonal antibody supplied in PBS with 0.09% (W/V) sodium azide. This antibody is purified through a protein A column, followed by peptide affinity purification.

Storage

Maintain refrigerated at 2-8°C for up to 2 weeks. For long term storage store at -20°C in small aliquots to prevent freeze-thaw cycles.

Precautions

PPIL4 Antibody (N-term) is for research use only and not for use in diagnostic or therapeutic procedures.

PPIL4 Antibody (N-term) - Protein Information

Name PPIL4

Function PPIases accelerate the folding of proteins. It catalyzes the cis-trans isomerization of

proline imidic peptide bonds in oligopeptides (By similarity).

Cellular Location

Nucleus.

Tissue Location

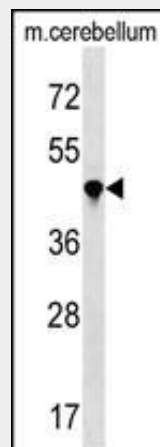
Abundantly expressed in kidney but has a ubiquitously low expression pattern in other adult tissues

PPIL4 Antibody (N-term) - Protocols

Provided below are standard protocols that you may find useful for product applications.

- [Western Blot](#)
- [Blocking Peptides](#)
- [Dot Blot](#)
- [Immunohistochemistry](#)
- [Immunofluorescence](#)
- [Immunoprecipitation](#)
- [Flow Cytometry](#)
- [Cell Culture](#)

PPIL4 Antibody (N-term) - Images



PPIL4 Antibody (N-term) (Cat. #AP18625a) western blot analysis in mouse cerebellum tissue lysates (35ug/lane). This demonstrates the PPIL4 antibody detected the PPIL4 protein (arrow).

PPIL4 Antibody (N-term) - Background

This gene is a member of the cyclophilin family of peptidylprolyl isomerases. The cyclophilins are a highly conserved family, members of which play an important role in protein folding, immunosuppression by cyclosporin A, and infection of HIV-1 virions.

PPIL4 Antibody (N-term) - References

- Sugiyama, N., et al. Mol. Cell Proteomics 6(6):1103-1109(2007)
Olsen, J.V., et al. Cell 127(3):635-648(2006)
Colland, F., et al. Genome Res. 14(7):1324-1332(2004)
Mungall, A.J., et al. Nature 425(6960):805-811(2003)

Scanlan, M.J., et al. Cancer Immun. 1, 4 (2001) :