

**CNPY3 Antibody (N-term)**  
**Affinity Purified Rabbit Polyclonal Antibody (Pab)**  
**Catalog # AP18622a**

**Specification**

---

**CNPY3 Antibody (N-term) - Product Information**

Application	WB,E
Primary Accession	<a href="#">O9BT09</a>
Other Accession	<a href="#">NP_006577.2</a>
Reactivity	Human
Host	Rabbit
Clonality	Polyclonal
Isotype	Rabbit IgG
Calculated MW	30748
Antigen Region	66-92

**CNPY3 Antibody (N-term) - Additional Information**

**Gene ID** 10695

**Other Names**

Protein canopy homolog 3, CTG repeat protein 4a, Expanded repeat-domain protein CAG/CTG 5, Protein associated with TLR4, Trinucleotide repeat-containing gene 5 protein, CNPY3, CTG4A, ERDA5, PRAT4A, TNRC5

**Target/Specificity**

This CNPY3 antibody is generated from rabbits immunized with a KLH conjugated synthetic peptide between 66-92 amino acids from the N-terminal region of human CNPY3.

**Dilution**

WB~~1:1000

**Format**

Purified polyclonal antibody supplied in PBS with 0.09% (W/V) sodium azide. This antibody is purified through a protein A column, followed by peptide affinity purification.

**Storage**

Maintain refrigerated at 2-8°C for up to 2 weeks. For long term storage store at -20°C in small aliquots to prevent freeze-thaw cycles.

**Precautions**

CNPY3 Antibody (N-term) is for research use only and not for use in diagnostic or therapeutic procedures.

**CNPY3 Antibody (N-term) - Protein Information**

**Name** CNPY3

**Synonyms** CTG4A, ERDA5, PRAT4A, TNRC5

**Function** Toll-like receptor (TLR)-specific co-chaperone for HSP90B1. Required for proper TLR folding, except that of TLR3, and hence controls TLR exit from the endoplasmic reticulum. Consequently, required for both innate and adaptive immune responses (By similarity).

**Cellular Location**

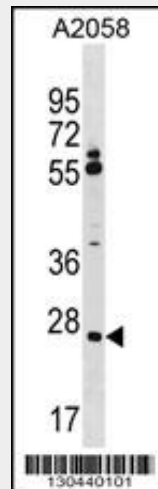
Endoplasmic reticulum.

**CNPY3 Antibody (N-term) - Protocols**

Provided below are standard protocols that you may find useful for product applications.

- [Western Blot](#)
- [Blocking Peptides](#)
- [Dot Blot](#)
- [Immunohistochemistry](#)
- [Immunofluorescence](#)
- [Immunoprecipitation](#)
- [Flow Cytometry](#)
- [Cell Culture](#)

**CNPY3 Antibody (N-term) - Images**



CNPY3 Antibody (N-term) (Cat. #AP18622a) western blot analysis in A2058 cell line lysates (35ug/lane). This demonstrates the CNPY3 antibody detected the CNPY3 protein (arrow).

**CNPY3 Antibody (N-term) - Background**

PRAT4A is associated with the immature form of TLR4 (MIM 603030) and regulates its cell surface expression (Wakabayashi et al., 2006 [PubMed 16849487]).

**CNPY3 Antibody (N-term) - References**

- Wakabayashi, Y., et al. J. Immunol. 177(3):1772-1779(2006)  
Clark, H.F., et al. Genome Res. 13(10):2265-2270(2003)  
Zhang, H., et al. Nat. Biotechnol. 21(6):660-666(2003)  
Zhang, H., et al. Nat. Biotechnol. 21(6):660-666(2003)

Margolis, R.L., et al. Hum. Genet. 100(1):114-122(1997)