

**KIT Antibody (Center S746)**  
**Affinity Purified Rabbit Polyclonal Antibody (Pab)**  
**Catalog # AP18614c**

**Specification**

---

**KIT Antibody (Center S746) - Product Information**

Application	WB,E
Primary Accession	<a href="#">P10721</a>
Other Accession	<a href="#">NP_000213.1</a>
Reactivity	Human
Host	Rabbit
Clonality	Polyclonal
Isotype	Rabbit IgG
Calculated MW	109865
Antigen Region	724-753

**KIT Antibody (Center S746) - Additional Information**

**Gene ID** 3815

**Other Names**

Mast/stem cell growth factor receptor Kit, SCFR, Piebald trait protein, PBT, Proto-oncogene c-Kit, Tyrosine-protein kinase Kit, p145 c-kit, v-kit Hardy-Zuckerman 4 feline sarcoma viral oncogene homolog, CD117, KIT, SCFR

**Target/Specificity**

This KIT antibody is generated from rabbits immunized with a KLH conjugated synthetic peptide between 724-753 amino acids from the Central region of human KIT.

**Dilution**

WB~~1:1000

**Format**

Purified polyclonal antibody supplied in PBS with 0.09% (W/V) sodium azide. This antibody is purified through a protein A column, followed by peptide affinity purification.

**Storage**

Maintain refrigerated at 2-8°C for up to 2 weeks. For long term storage store at -20°C in small aliquots to prevent freeze-thaw cycles.

**Precautions**

KIT Antibody (Center S746) is for research use only and not for use in diagnostic or therapeutic procedures.

**KIT Antibody (Center S746) - Protein Information**

**Name** KIT

## Synonyms SCFR

**Function** Tyrosine-protein kinase that acts as a cell-surface receptor for the cytokine KITLG/SCF and plays an essential role in the regulation of cell survival and proliferation, hematopoiesis, stem cell maintenance, gametogenesis, mast cell development, migration and function, and in melanogenesis. In response to KITLG/SCF binding, KIT can activate several signaling pathways. Phosphorylates PIK3R1, PLCG1, SH2B2/APS and CBL. Activates the AKT1 signaling pathway by phosphorylation of PIK3R1, the regulatory subunit of phosphatidylinositol 3-kinase. Activated KIT also transmits signals via GRB2 and activation of RAS, RAF1 and the MAP kinases MAPK1/ERK2 and/or MAPK3/ERK1. Promotes activation of STAT family members STAT1, STAT3, STAT5A and STAT5B. Activation of PLCG1 leads to the production of the cellular signaling molecules diacylglycerol and inositol 1,4,5- trisphosphate. KIT signaling is modulated by protein phosphatases, and by rapid internalization and degradation of the receptor. Activated KIT promotes phosphorylation of the protein phosphatases PTPN6/SHP-1 and PTPRU, and of the transcription factors STAT1, STAT3, STAT5A and STAT5B. Promotes phosphorylation of PIK3R1, CBL, CRK (isoform Crk-II), LYN, MAPK1/ERK2 and/or MAPK3/ERK1, PLCG1, SRC and SHC1.

## Cellular Location

[Isoform 1]: Cell membrane; Single-pass type I membrane protein [Isoform 3]: Cytoplasm. Note=Detected in the cytoplasm of spermatozoa, especially in the equatorial and subacrosomal region of the sperm head.

## Tissue Location

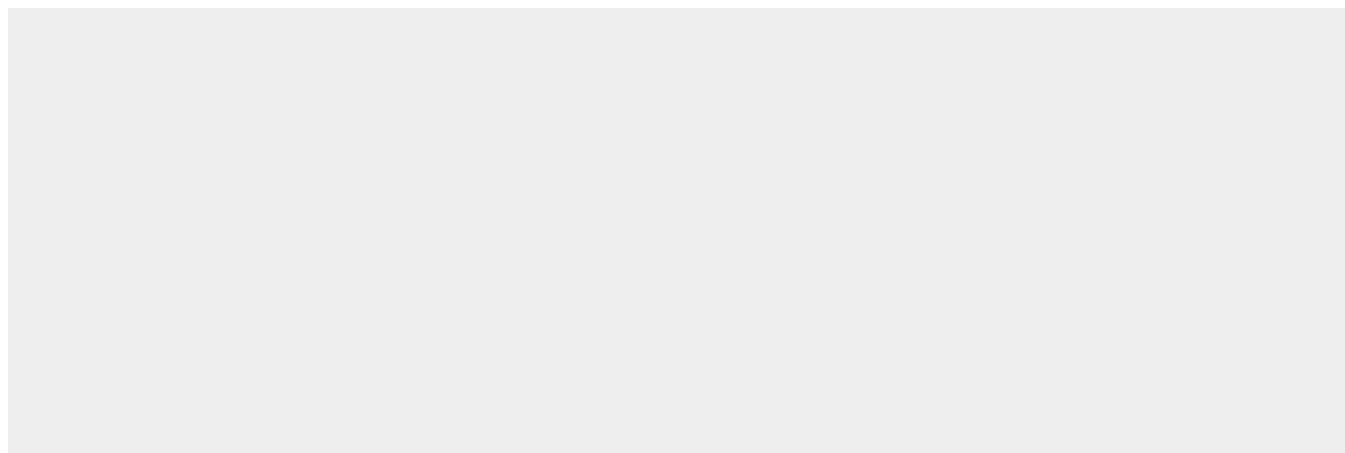
[Isoform 3]: In testis, detected in spermatogonia in the basal layer and in interstitial Leydig cells but not in Sertoli cells or spermatocytes inside the seminiferous tubules (at protein level) (PubMed:20601678). Expression is maintained in ejaculated spermatozoa (at protein level) (PubMed:20601678)

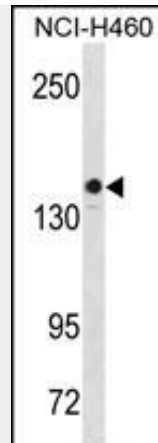
## KIT Antibody (Center S746) - Protocols

Provided below are standard protocols that you may find useful for product applications.

- [Western Blot](#)
- [Blocking Peptides](#)
- [Dot Blot](#)
- [Immunohistochemistry](#)
- [Immunofluorescence](#)
- [Immunoprecipitation](#)
- [Flow Cytometry](#)
- [Cell Culture](#)

## KIT Antibody (Center S746) - Images





KIT Antibody (S746) (Cat. #AP18614c) western blot analysis in NCI-H460 cell line lysates (35ug/lane). This demonstrates the KIT antibody detected the KIT protein (arrow).

#### **KIT Antibody (Center S746) - Background**

This gene encodes the human homolog of the proto-oncogene c-kit. C-kit was first identified as the cellular homolog of the feline sarcoma viral oncogene v-kit. This protein is a type 3 transmembrane receptor for MGF (mast cell growth factor, also known as stem cell factor). Mutations in this gene are associated with gastrointestinal stromal tumors, mast cell disease, acute myelogenous leukemia, and piebaldism. Multiple transcript variants encoding different isoforms have been found for this gene.

#### **KIT Antibody (Center S746) - References**

Molderings, G.J., et al. Immunogenetics 62 (11-12), 721-727 (2010) :  
Cheng, M., et al. Circ. Res. 107(9):1083-1093(2010)  
Chi, P., et al. Nature 467(7317):849-853(2010)  
Rossi, S., et al. Am. J. Surg. Pathol. 34(10):1480-1491(2010)  
Chen, P., et al. World J. Gastroenterol. 16(33):4227-4232(2010)