

ESAM Antibody (C-term)
Affinity Purified Rabbit Polyclonal Antibody (Pab)
Catalog # AP18609b

Specification

ESAM Antibody (C-term) - Product Information

Application	WB,E
Primary Accession	O96AP7
Other Accession	O95KI3 , NP_620411.2
Reactivity	Human
Predicted	Monkey
Host	Rabbit
Clonality	Polyclonal
Isotype	Rabbit IgG
Calculated MW	41176
Antigen Region	259-289

ESAM Antibody (C-term) - Additional Information

Gene ID 90952

Other Names

Endothelial cell-selective adhesion molecule, ESAM

Target/Specificity

This ESAM antibody is generated from rabbits immunized with a KLH conjugated synthetic peptide between 259-289 amino acids from the C-terminal region of human ESAM.

Dilution

WB~~1:1000

Format

Purified polyclonal antibody supplied in PBS with 0.09% (W/V) sodium azide. This antibody is purified through a protein A column, followed by peptide affinity purification.

Storage

Maintain refrigerated at 2-8°C for up to 2 weeks. For long term storage store at -20°C in small aliquots to prevent freeze-thaw cycles.

Precautions

ESAM Antibody (C-term) is for research use only and not for use in diagnostic or therapeutic procedures.

ESAM Antibody (C-term) - Protein Information

Name ESAM

Function Can mediate aggregation most likely through a homophilic molecular interaction.

Cellular Location

Cell junction, adherens junction {ECO:0000250|UniProtKB:Q925F2}. Cell junction, tight junction {ECO:0000250|UniProtKB:Q925F2}. Cell membrane; Single-pass type I membrane protein {ECO:0000250|UniProtKB:Q925F2}

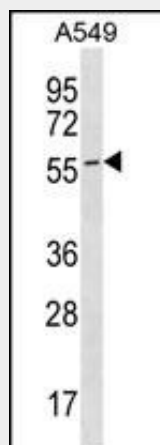
Tissue Location

Highly expressed in endothelial cells.

ESAM Antibody (C-term) - Protocols

Provided below are standard protocols that you may find useful for product applications.

- [Western Blot](#)
- [Blocking Peptides](#)
- [Dot Blot](#)
- [Immunohistochemistry](#)
- [Immunofluorescence](#)
- [Immunoprecipitation](#)
- [Flow Cytometry](#)
- [Cell Culture](#)

ESAM Antibody (C-term) - Images

ESAM Antibody (C-term) (Cat. #AP18609b) western blot analysis in A549 cell line lysates (35ug/lane). This demonstrates the ESAM antibody detected the ESAM protein (arrow).

ESAM Antibody (C-term) - Background

ESAM can mediate aggregation most likely through a homophilic molecular interaction (By similarity).

ESAM Antibody (C-term) - References

Rohatgi, A., et al. *Arterioscler. Thromb. Vasc. Biol.* 29(10):1684-1690(2009)
Trynka, G., et al. *Gut* 58(8):1078-1083(2009)
Zhang, Z., et al. *Protein Sci.* 13(10):2819-2824(2004)
Clark, H.F., et al. *Genome Res.* 13(10):2265-2270(2003)
Nasdala, I., et al. *J. Biol. Chem.* 277(18):16294-16303(2002)