

Mouse Slc10a2 Antibody (N-term)
Affinity Purified Rabbit Polyclonal Antibody (Pab)
Catalog # AP18603a

Specification

Mouse Slc10a2 Antibody (N-term) - Product Information

Application	WB,E
Primary Accession	P70172
Other Accession	NP_035518.1
Reactivity	Mouse
Host	Rabbit
Clonality	Polyclonal
Isotype	Rabbit IgG
Calculated MW	38134
Antigen Region	39-65

Mouse Slc10a2 Antibody (N-term) - Additional Information

Gene ID 20494

Other Names

Ileal sodium/bile acid cotransporter, Apical sodium-dependent bile acid transporter, ASBT, Ileal Na(+)/bile acid cotransporter, Ileal sodium-dependent bile acid transporter, IBAT, ISBT, Na(+)-dependent ileal bile acid transporter, Sodium/taurocholate cotransporting polypeptide, ileal, Solute carrier family 10 member 2, Slc10a2, Ntcp2

Target/Specificity

This Mouse Slc10a2 antibody is generated from rabbits immunized with a KLH conjugated synthetic peptide between 39-65 amino acids from the N-terminal region of mouse Slc10a2.

Dilution

WB~~1:1000

Format

Purified polyclonal antibody supplied in PBS with 0.09% (W/V) sodium azide. This antibody is purified through a protein A column, followed by peptide affinity purification.

Storage

Maintain refrigerated at 2-8°C for up to 2 weeks. For long term storage store at -20°C in small aliquots to prevent freeze-thaw cycles.

Precautions

Mouse Slc10a2 Antibody (N-term) is for research use only and not for use in diagnostic or therapeutic procedures.

Mouse Slc10a2 Antibody (N-term) - Protein Information

Name Slc10a2

Synonyms Ntcp2

Function Plays a critical role in the sodium-dependent reabsorption of bile acids from the lumen of the small intestine (PubMed:[10101301](#)). Transports various bile acids, unconjugated or conjugated, such as cholate and taurocholate (PubMed:[10101301](#)). Also responsible for bile acid transport in the renal proximal tubules, a salvage mechanism that helps conserve bile acids. Works collaboratively with the Na(+)- taurocholate cotransporting polypeptide (NTCP), the organic solute transporter (OST), and the bile salt export pump (BSEP), to ensure efficacious biological recycling of bile acids during enterohepatic circulation (By similarity).

Cellular Location

Membrane; Multi-pass membrane protein

Tissue Location

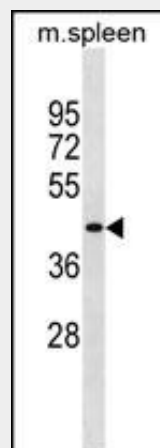
Expressed in ileum..

Mouse Slc10a2 Antibody (N-term) - Protocols

Provided below are standard protocols that you may find useful for product applications.

- [Western Blot](#)
- [Blocking Peptides](#)
- [Dot Blot](#)
- [Immunohistochemistry](#)
- [Immunofluorescence](#)
- [Immunoprecipitation](#)
- [Flow Cytometry](#)
- [Cell Culture](#)

Mouse Slc10a2 Antibody (N-term) - Images



Mouse Slc10a2 Antibody (N-term) (Cat. #AP18603a) western blot analysis in mouse spleen tissue lysates (35ug/lane). This demonstrates the Mouse Slc10a2 antibody detected the Mouse Slc10a2 protein (arrow).

Mouse Slc10a2 Antibody (N-term) - Background

Slc10a2 plays a critical role in the sodium-dependent reabsorption of bile acids from the lumen of the small intestine. Plays a key role in cholesterol metabolism (By similarity).

Mouse Slc10a2 Antibody (N-term) - References

- Halpern, M.D., et al. Am. J. Physiol. Gastrointest. Liver Physiol. 299 (3), G623-G631 (2010) :
Festing, M.H., et al. Genesis 47(12):858-863(2009)
Cheng, X., et al. Drug Metab. Dispos. 37(11):2178-2185(2009)
Sarwar, Z., et al. Am. J. Physiol. Gastrointest. Liver Physiol. 297 (3), G532-G538 (2009) :
Saeki, T., et al. Biosci. Biotechnol. Biochem. 73(7):1535-1540(2009)