

**TBC1D2 Antibody (Center)**  
**Affinity Purified Rabbit Polyclonal Antibody (Pab)**  
**Catalog # AP18590C**

**Specification**

---

**TBC1D2 Antibody (Center) - Product Information**

Application	WB,E
Primary Accession	<a href="#">O9BYX2</a>
Other Accession	<a href="#">NP_060891.3</a>
Reactivity	Human, Mouse
Host	Rabbit
Clonality	Polyclonal
Isotype	Rabbit IgG
Calculated MW	105414
Antigen Region	438-465

**TBC1D2 Antibody (Center) - Additional Information**

**Gene ID** 55357

**Other Names**

TBC1 domain family member 2A, Armus, Prostate antigen recognized and identified by SEREX 1, PARIS-1, TBC1D2, PARIS1, PP8997, TBC1D2A

**Target/Specificity**

This TBC1D2 antibody is generated from rabbits immunized with a KLH conjugated synthetic peptide between 438-465 amino acids from the Central region of human TBC1D2.

**Dilution**

WB~~1:1000

**Format**

Purified polyclonal antibody supplied in PBS with 0.09% (W/V) sodium azide. This antibody is purified through a protein A column, followed by peptide affinity purification.

**Storage**

Maintain refrigerated at 2-8°C for up to 2 weeks. For long term storage store at -20°C in small aliquots to prevent freeze-thaw cycles.

**Precautions**

TBC1D2 Antibody (Center) is for research use only and not for use in diagnostic or therapeutic procedures.

**TBC1D2 Antibody (Center) - Protein Information**

**Name** TBC1D2

**Synonyms** PARIS1, PP8997, TBC1D2A

**Function** Acts as a GTPase-activating protein for RAB7A. Signal effector acting as a linker between RAC1 and RAB7A, leading to RAB7A inactivation and subsequent inhibition of cadherin degradation and reduced cell-cell adhesion.

#### **Cellular Location**

Cytoplasm. Cytoplasmic vesicle. Cell junction

#### **Tissue Location**

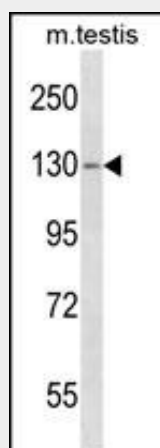
Expressed in a broad range of tissues, especially in kidney, liver, lung and placenta. Also expressed in keratinocytes and epithelia-containing organs. Isoform 2 is differentially expressed in prostate normal and cancer cells (at protein level)

### **TBC1D2 Antibody (Center) - Protocols**

Provided below are standard protocols that you may find useful for product applications.

- [Western Blot](#)
- [Blocking Peptides](#)
- [Dot Blot](#)
- [Immunohistochemistry](#)
- [Immunofluorescence](#)
- [Immunoprecipitation](#)
- [Flow Cytometry](#)
- [Cell Culture](#)

### **TBC1D2 Antibody (Center) - Images**



TBC1D2 Antibody (Center) (Cat. #AP18590c) western blot analysis in mouse testis tissue lysates (35ug/lane). This demonstrates the TBC1D2 antibody detected the TBC1D2 protein (arrow).

### **TBC1D2 Antibody (Center) - Background**

TBC1D2 acts as GTPase-activating protein for RAB7A. Signal effector acting as a linker between RAC1 and RAB7A, leading to RAB7A inactivation and subsequent inhibition of cadherin degradation and reduced cell-cell adhesion.

### **TBC1D2 Antibody (Center) - References**

Letra, A., et al. Am. J. Med. Genet. A 152A (7), 1701-1710 (2010) :  
Ishibashi, K., et al. Genes Cells 14(1):41-52(2009)

Olsen, J.V., et al. Cell 127(3):635-648(2006)

Beausoleil, S.A., et al. Proc. Natl. Acad. Sci. U.S.A. 101(33):12130-12135(2004)

Zhou, Y., et al. Biochem. Biophys. Res. Commun. 290(2):830-838(2002)