

RAB5B Antibody (Center)
Affinity Purified Rabbit Polyclonal Antibody (Pab)
Catalog # AP18564c

Specification

RAB5B Antibody (Center) - Product Information

Application	WB,E
Primary Accession	P61020
Other Accession	P61021 , Q5ZHW4 , NP_002859.1
Reactivity	Human, Mouse
Predicted	Chicken
Host	Rabbit
Clonality	Polyclonal
Isotype	Rabbit IgG
Calculated MW	23707
Antigen Region	85-112

RAB5B Antibody (Center) - Additional Information

Gene ID 5869

Other Names

Ras-related protein Rab-5B, RAB5B

Target/Specificity

This RAB5B antibody is generated from rabbits immunized with a KLH conjugated synthetic peptide between 85-112 amino acids from the Central region of human RAB5B.

Dilution

WB~~1:1000

Format

Purified polyclonal antibody supplied in PBS with 0.09% (W/V) sodium azide. This antibody is purified through a protein A column, followed by peptide affinity purification.

Storage

Maintain refrigerated at 2-8°C for up to 2 weeks. For long term storage store at -20°C in small aliquots to prevent freeze-thaw cycles.

Precautions

RAB5B Antibody (Center) is for research use only and not for use in diagnostic or therapeutic procedures.

RAB5B Antibody (Center) - Protein Information

Name RAB5B

Function Protein transport. Probably involved in vesicular traffic.

Cellular Location

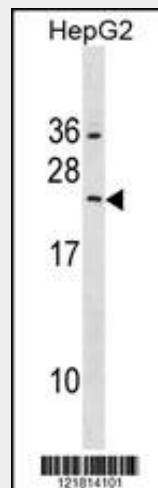
Cell membrane; Lipid-anchor; Cytoplasmic side. Early endosome membrane; Lipid-anchor. Melanosome. Note=Enriched in stage I melanosomes

RAB5B Antibody (Center) - Protocols

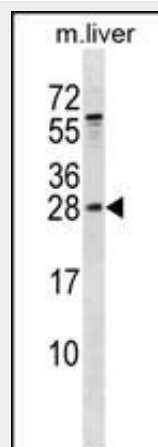
Provided below are standard protocols that you may find useful for product applications.

- [Western Blot](#)
- [Blocking Peptides](#)
- [Dot Blot](#)
- [Immunohistochemistry](#)
- [Immunofluorescence](#)
- [Immunoprecipitation](#)
- [Flow Cytometry](#)
- [Cell Culture](#)

RAB5B Antibody (Center) - Images



RAB5B Antibody (Center) (Cat. #AP18564c) western blot analysis in HepG2 cell line lysates (35ug/lane). This demonstrates the RAB5B antibody detected the RAB5B protein (arrow).



RAB5B Antibody (Center) (Cat. #AP18564c) western blot analysis in mouse liver tissue lysates (35ug/lane). This demonstrates the RAB5B antibody detected the RAB5B protein (arrow).

RAB5B Antibody (Center) - Background

Protein transport. Probably involved in vesicular traffic (By similarity).

RAB5B Antibody (Center) - References

- Jin, Y., et al. Nat. Genet. 42(7):576-578(2010)
Chen, P.I., et al. J. Biol. Chem. 284(44):30328-30338(2009)
Shin, N., et al. Exp. Cell Res. 314(10):2055-2065(2008)
Hakonarson, H., et al. Diabetes 57(4):1143-1146(2008)
Hirota, Y., et al. Biochem. Biophys. Res. Commun. 364(1):40-47(2007)