

MLLT2 Antibody (C-term T1196)
Affinity Purified Rabbit Polyclonal Antibody (Pab)
Catalog # AP18562B

Specification

MLLT2 Antibody (C-term T1196) - Product Information

Application	WB,E
Primary Accession	P51825
Other Accession	NP_005926
Reactivity	Human
Host	Rabbit
Clonality	Polyclonal
Isotype	Rabbit IgG
Calculated MW	131422
Antigen Region	1181-1210

MLLT2 Antibody (C-term T1196) - Additional Information

Gene ID 4299

Other Names

AF4/FMR2 family member 1, ALL1-fused gene from chromosome 4 protein, Protein AF-4, Protein FEL, Proto-oncogene AF4, AFF1, AF4, FEL, MLLT2, PBM1

Target/Specificity

This MLLT2 antibody is generated from rabbits immunized with a KLH conjugated synthetic peptide between 1181-1210 amino acids from the C-terminal region of human MLLT2.

Dilution

WB~~1:1000

Format

Purified polyclonal antibody supplied in PBS with 0.09% (W/V) sodium azide. This antibody is purified through a protein A column, followed by peptide affinity purification.

Storage

Maintain refrigerated at 2-8°C for up to 2 weeks. For long term storage store at -20°C in small aliquots to prevent freeze-thaw cycles.

Precautions

MLLT2 Antibody (C-term T1196) is for research use only and not for use in diagnostic or therapeutic procedures.

MLLT2 Antibody (C-term T1196) - Protein Information

Name AFF1

Synonyms AF4, FEL, MLLT2, PBM1

Cellular Location

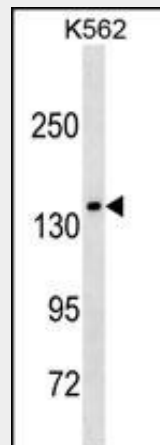
Nucleus.

MLLT2 Antibody (C-term T1196) - Protocols

Provided below are standard protocols that you may find useful for product applications.

- [Western Blot](#)
- [Blocking Peptides](#)
- [Dot Blot](#)
- [Immunohistochemistry](#)
- [Immunofluorescence](#)
- [Immunoprecipitation](#)
- [Flow Cytometry](#)
- [Cell Culture](#)

MLLT2 Antibody (C-term T1196) - Images



MLLT2 Antibody (C-term T1196) (Cat. #AP18562b) western blot analysis in K562 cell line lysates (35ug/lane). This demonstrates the MLLT2 antibody detected the MLLT2 protein (arrow).

MLLT2 Antibody (C-term T1196) - Background

AFF1 belongs to the AF4 family.

MLLT2 Antibody (C-term T1196) - References

- Bailey, S.D., et al. Diabetes Care 33(10):2250-2253(2010)
Rose, J.E., et al. Mol. Med. 16 (7-8), 247-253 (2010) :
Talmud, P.J., et al. Am. J. Hum. Genet. 85(5):628-642(2009)
Krivtsov, A.V., et al. Cancer Cell 14(5):355-368(2008)
Bizarro, S., et al. Cancer Genet. Cytogenet. 178(1):61-64(2007)