

PIN4 Antibody (N-term)
Affinity Purified Rabbit Polyclonal Antibody (Pab)
Catalog # AP18546a

Specification

PIN4 Antibody (N-term) - Product Information

Application	WB,E
Primary Accession	O9Y237
Other Accession	NP_006214.2
Reactivity	Human
Host	Rabbit
Clonality	Polyclonal
Isotype	Rabbit IgG
Calculated MW	13810
Antigen Region	6-32

PIN4 Antibody (N-term) - Additional Information

Gene ID 5303

Other Names

Peptidyl-prolyl cis-trans isomerase NIMA-interacting 4, Parvulin-14, Par14, hPar14, Parvulin-17, Par17, hPar17, Peptidyl-prolyl cis-trans isomerase Pin4, PPIase Pin4, Peptidyl-prolyl cis/trans isomerase EPVH, hEPVH, Rotamase Pin4, PIN4

Target/Specificity

This PIN4 antibody is generated from rabbits immunized with a KLH conjugated synthetic peptide between 6-32 amino acids from the N-terminal region of human PIN4.

Dilution

WB~~1:1000

Format

Purified polyclonal antibody supplied in PBS with 0.09% (W/V) sodium azide. This antibody is purified through a protein A column, followed by peptide affinity purification.

Storage

Maintain refrigerated at 2-8°C for up to 2 weeks. For long term storage store at -20°C in small aliquots to prevent freeze-thaw cycles.

Precautions

PIN4 Antibody (N-term) is for research use only and not for use in diagnostic or therapeutic procedures.

PIN4 Antibody (N-term) - Protein Information

Name PIN4

Function Isoform 1 is involved as a ribosomal RNA processing factor in ribosome biogenesis. Binds to tightly bent AT-rich stretches of double-stranded DNA.

Cellular Location

[Isoform 1]: Nucleus, nucleolus. Cytoplasm, cytoskeleton, spindle. Cytoplasm. Note=Colocalizes in the nucleolus during interphase and on the spindle apparatus during mitosis with NPM1

Tissue Location

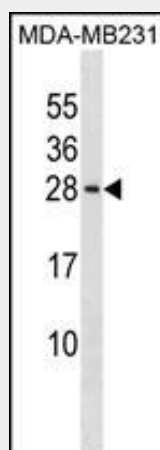
Isoform 2 is much more stable than isoform 1 (at protein level). Ubiquitous. Isoform 1 and isoform 2 are expressed in kidney, liver, blood vessel, brain, mammary gland, skeletal muscle, small intestine and submandibularis. Isoform 1 transcripts are much more abundant than isoform 2 in each tissue analyzed

PIN4 Antibody (N-term) - Protocols

Provided below are standard protocols that you may find useful for product applications.

- [Western Blot](#)
- [Blocking Peptides](#)
- [Dot Blot](#)
- [Immunohistochemistry](#)
- [Immunofluorescence](#)
- [Immunoprecipitation](#)
- [Flow Cytometry](#)
- [Cell Culture](#)

PIN4 Antibody (N-term) - Images



PIN4 Antibody (N-term) (Cat. #AP18546a) western blot analysis in MDA-MB231 cell line lysates (35ug/lane). This demonstrates the PIN4 antibody detected the PIN4 protein (arrow).

PIN4 Antibody (N-term) - Background

This gene encodes a member of the parvulin subfamily of the peptidyl-prolyl cis/trans isomerase protein family. The encoded protein catalyzes the isomerization of peptidylprolyl bonds, and may play a role in the cell cycle, chromatin remodeling, and/or ribosome biogenesis. The encoded protein may play an additional role in the mitochondria.

PIN4 Antibody (N-term) - References

- Fujiyama-Nakamura, S., et al. Mol. Cell Proteomics 8(7):1552-1565(2009)
Kessler, D., et al. BMC Biol. 5, 37 (2007) :
Mueller, J.W., et al. BMC Mol. Biol. 7, 9 (2006) :
Reimer, T., et al. J. Mol. Biol. 330(5):955-966(2003)
Reimer, T., et al. J. Mol. Biol. 330(5):955-966(2003)