

**ERLIN2 Antibody (C-term)**  
**Affinity Purified Rabbit Polyclonal Antibody (Pab)**  
**Catalog # AP18538b**

**Specification**

---

**ERLIN2 Antibody (C-term) - Product Information**

Application	WB,E
Primary Accession	<a href="#">O94905</a>
Other Accession	<a href="#">NP_001003790.1</a>
Reactivity	Human, Mouse, Rat
Host	Rabbit
Clonality	Polyclonal
Isotype	Rabbit IgG
Calculated MW	37840
Antigen Region	307-333

**ERLIN2 Antibody (C-term) - Additional Information**

**Gene ID** 11160

**Other Names**

Erlin-2, Endoplasmic reticulum lipid raft-associated protein 2, Stomatin-prohibitin-flotillin-HflC/K domain-containing protein 2, SPFH domain-containing protein 2, ERLIN2, C8orf2, SPFH2

**Target/Specificity**

This ERLIN2 antibody is generated from rabbits immunized with a KLH conjugated synthetic peptide between 307-333 amino acids from the C-terminal region of human ERLIN2.

**Dilution**

WB~~1:2000

**Format**

Purified polyclonal antibody supplied in PBS with 0.09% (W/V) sodium azide. This antibody is purified through a protein A column, followed by peptide affinity purification.

**Storage**

Maintain refrigerated at 2-8°C for up to 2 weeks. For long term storage store at -20°C in small aliquots to prevent freeze-thaw cycles.

**Precautions**

ERLIN2 Antibody (C-term) is for research use only and not for use in diagnostic or therapeutic procedures.

**ERLIN2 Antibody (C-term) - Protein Information**

**Name** ERLIN2

**Synonyms** C8orf2, SPFH2

**Function** Component of the ERLIN1/ERLIN2 complex which mediates the endoplasmic reticulum-associated degradation (ERAD) of inositol 1,4,5- trisphosphate receptors (IP3Rs) such as ITPR1 (PubMed:[17502376](#), PubMed:[19240031](#)). Promotes sterol-accelerated ERAD of HMGCR probably implicating an AMFR/gp78-containing ubiquitin ligase complex (PubMed:[21343306](#)). Involved in regulation of cellular cholesterol homeostasis by regulation the SREBP signaling pathway. May promote ER retention of the SCAP-SREBF complex (PubMed:[24217618](#)).

**Cellular Location**

Endoplasmic reticulum membrane; Single-pass type II membrane protein. Note=Associated with lipid raft-like domains of the endoplasmic reticulum membrane

**Tissue Location**

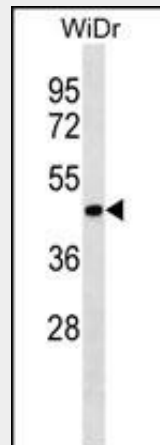
Ubiquitous..

**ERLIN2 Antibody (C-term) - Protocols**

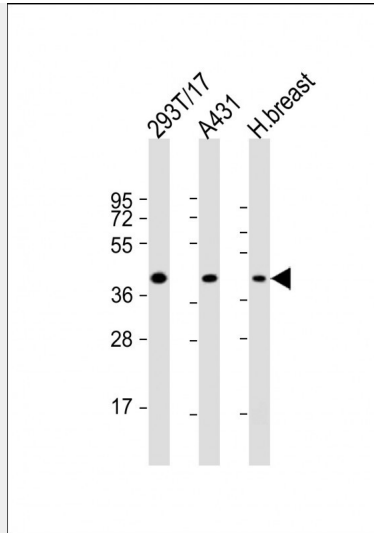
Provided below are standard protocols that you may find useful for product applications.

- [Western Blot](#)
- [Blocking Peptides](#)
- [Dot Blot](#)
- [Immunohistochemistry](#)
- [Immunofluorescence](#)
- [Immunoprecipitation](#)
- [Flow Cytometry](#)
- [Cell Culture](#)

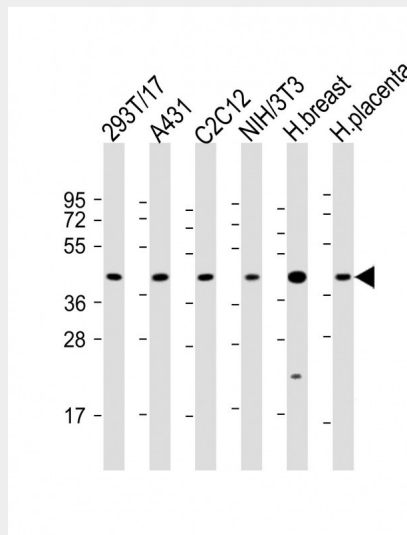
**ERLIN2 Antibody (C-term) - Images**



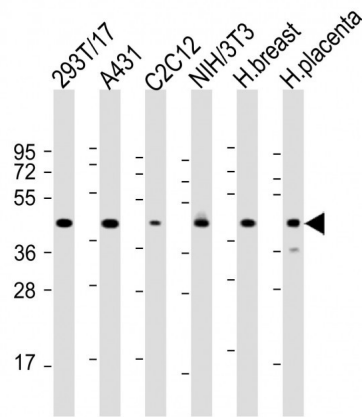
ERLIN2 Antibody (C-term) (Cat. #AP18538b) western blot analysis in WiDr cell line lysates (35ug/lane). This demonstrates the ERLIN2 antibody detected the ERLIN2 protein (arrow).



All lanes : Anti-ERLIN2 Antibody (C-term) at 1:2000 dilution Lane 1: 293T/17 whole cell lysate  
 Lane 2: A431 whole cell lysate Lane 3: human breast lysate Lysates/proteins at 20 µg per lane.  
 Secondary Goat Anti-Rabbit IgG, (H+L), Peroxidase conjugated at 1/10000 dilution. Predicted band size : 38 kDa  
 Blocking/Dilution buffer: 5% NFDM/TBST.



All lanes : Anti-ERLIN2 Antibody (C-term) at 1:2000 dilution Lane 1: 293T/17 whole cell lysate  
 Lane 2: A431 whole cell lysate Lane 3: C2C12 whole cell lysate Lane 4: NIH/3T3 whole cell lysate  
 Lane 5: human breast lysate Lane 6: human placenta lysate Lysates/proteins at 20 µg per lane.  
 Secondary Goat Anti-Rabbit IgG, (H+L), Peroxidase conjugated at 1/10000 dilution. Predicted band size : 38 kDa  
 Blocking/Dilution buffer: 5% NFDM/TBST.



All lanes : Anti-ERLIN2 Antibody (C-term) at 1:2000 dilution Lane 1: 293T/17 whole cell lysate  
 Lane 2: A431 whole cell lysate Lane 3: C2C12 whole cell lysate Lane 4: NIH/3T3 whole cell lysate  
 Lane 5: human breast lysate Lane 6: human placenta lysate Lysates/proteins at 20 µg per lane.  
 Secondary Goat Anti-Rabbit IgG, (H+L), Peroxidase conjugated at 1/10000 dilution. Predicted band size : 38 kDa  
 Blocking/Dilution buffer: 5% NFDM/TBST.

#### **ERLIN2 Antibody (C-term) - Background**

Component of the ERLIN1/ERLIN2 complex which mediates the endoplasmic reticulum-associated degradation (ERAD) of inositol 1,4,5-trisphosphate receptors (IP3Rs). Also involved in ITPR1 degradation by the ERAD pathway.

#### **ERLIN2 Antibody (C-term) - References**

- Wang, Y., et al. *Biochim. Biophys. Acta* 1793(11):1710-1718(2009)
- Pearce, M.M., et al. *J. Biol. Chem.* 284(16):10433-10445(2009)
- Pearce, M.M., et al. *J. Biol. Chem.* 282(28):20104-20115(2007)
- Browman, D.T., et al. *J. Cell. Sci.* 119 (PT 15), 3149-3160 (2006) :
- Garcia, M.J., et al. *Oncogene* 24(33):5235-5245(2005)