

ISOC2 Antibody (C-term)
Affinity Purified Rabbit Polyclonal Antibody (Pab)
Catalog # AP18522B**Specification**

ISOC2 Antibody (C-term) - Product Information

| | |
|-------------------|---|
| Application | WB,E |
| Primary Accession | O96AB3 |
| Other Accession | O4R826 , NP_001129673.1 |
| Reactivity | Human |
| Predicted | Monkey |
| Host | Rabbit |
| Clonality | Polyclonal |
| Isotype | Rabbit IgG |
| Calculated MW | 22337 |
| Antigen Region | 159-188 |

ISOC2 Antibody (C-term) - Additional Information**Gene ID** 79763**Other Names**

Isochorismatase domain-containing protein 2, mitochondrial, ISOC2

Target/Specificity

This ISOC2 antibody is generated from rabbits immunized with a KLH conjugated synthetic peptide between 159-188 amino acids from the C-terminal region of human ISOC2.

Dilution

WB~~1:1000

Format

Purified polyclonal antibody supplied in PBS with 0.09% (W/V) sodium azide. This antibody is purified through a protein A column, followed by peptide affinity purification.

Storage

Maintain refrigerated at 2-8°C for up to 2 weeks. For long term storage store at -20°C in small aliquots to prevent freeze-thaw cycles.

Precautions

ISOC2 Antibody (C-term) is for research use only and not for use in diagnostic or therapeutic procedures.

ISOC2 Antibody (C-term) - Protein Information**Name** ISOC2**Cellular Location**

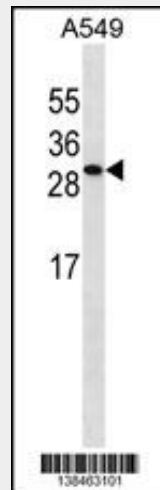
Cytoplasm. Nucleus. Note=Localizes to the nucleus in the presence of CDKN2A

ISOC2 Antibody (C-term) - Protocols

Provided below are standard protocols that you may find useful for product applications.

- [Western Blot](#)
- [Blocking Peptides](#)
- [Dot Blot](#)
- [Immunohistochemistry](#)
- [Immunofluorescence](#)
- [Immunoprecipitation](#)
- [Flow Cytometry](#)
- [Cell Culture](#)

ISOC2 Antibody (C-term) - Images



ISOC2 Antibody (C-term) (Cat. #AP18522b) western blot analysis in A549 cell line lysates (35ug/lane). This demonstrates the ISOC2 antibody detected the ISOC2 protein (arrow).

ISOC2 Antibody (C-term) - Background

ISOC2 belongs to the isochorismatase family.

ISOC2 Antibody (C-term) - References

- Huang, X., et al. *Biochem. Biophys. Res. Commun.* 361(2):287-293(2007)
Lamesch, P., et al. *Genomics* 89(3):307-315(2007)
Lehner, B., et al. *Genome Res.* 14(7):1315-1323(2004)
Leem, S.H., et al. *Genome Res.* 14(2):239-246(2004)