

**FRMD3 Antibody (Center)**  
**Affinity Purified Rabbit Polyclonal Antibody (Pab)**  
**Catalog # AP18521c**

## Specification

---

### FRMD3 Antibody (Center) - Product Information

Application	WB,E
Primary Accession	<a href="#">A2A2Y4</a>
Other Accession	<a href="#">NP_777598.3</a>
Reactivity	Human
Host	Rabbit
Clonality	Polyclonal
Isotype	Rabbit IgG
Calculated MW	68772
Antigen Region	250-279

### FRMD3 Antibody (Center) - Additional Information

**Gene ID** 257019

#### Other Names

FERM domain-containing protein 3, Band 41-like protein 40, Ovary type protein 41, 41O, FRMD3, EPB41L4O

#### Target/Specificity

This FRMD3 antibody is generated from rabbits immunized with a KLH conjugated synthetic peptide between 250-279 amino acids from the Central region of human FRMD3.

#### Dilution

WB~~1:1000

#### Format

Purified polyclonal antibody supplied in PBS with 0.09% (W/V) sodium azide. This antibody is purified through a protein A column, followed by peptide affinity purification.

#### Storage

Maintain refrigerated at 2-8°C for up to 2 weeks. For long term storage store at -20°C in small aliquots to prevent freeze-thaw cycles.

#### Precautions

FRMD3 Antibody (Center) is for research use only and not for use in diagnostic or therapeutic procedures.

### FRMD3 Antibody (Center) - Protein Information

**Name** FRMD3

**Synonyms** EPB41L4O

**Function** Putative tumor suppressor gene that may be implicated in the origin and progression of lung cancer.

**Cellular Location**

Membrane; Single-pass membrane protein

**Tissue Location**

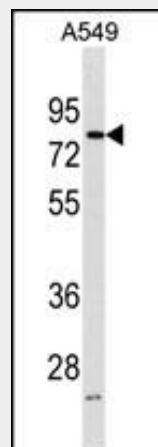
Ovary-specific..

**FRMD3 Antibody (Center) - Protocols**

Provided below are standard protocols that you may find useful for product applications.

- [Western Blot](#)
- [Blocking Peptides](#)
- [Dot Blot](#)
- [Immunohistochemistry](#)
- [Immunofluorescence](#)
- [Immunoprecipitation](#)
- [Flow Cytometry](#)
- [Cell Culture](#)

**FRMD3 Antibody (Center) - Images**



FRMD3 Antibody (Center) (Cat. #AP18521c) western blot analysis in A549 cell line lysates (35ug/lane). This demonstrates the FRMD3 antibody detected the FRMD3 protein (arrow).

**FRMD3 Antibody (Center) - Background**

Protein 4.1 of red blood cells, or 4.1R (EPB41; MIM 130500), is a multifunctional protein essential for maintaining erythrocyte shape and membrane mechanical properties. The protein 4.1 family comprises a group of structural proteins that includes, in addition to 4.1R, 4.1G (general type; MIM 603237), 4.1B (brain type; MIM 605331), 4.1N (neuron type; MIM 602879), and 4.1O (ovary type).

**FRMD3 Antibody (Center) - References**

Maeda, S., et al. Diabetes (2010) In press :

Rose, J. Phd, et al. Mol. Med. (2010) In press :  
Pezzolesi, M.G., et al. Diabetes 58(6):1403-1410(2009)  
Haase, D., et al. Oncogene 26(30):4464-4468(2007)  
Ni, X., et al. J. Hum. Genet. 48(2):101-106(2003)