

**TBX15 Antibody (N-term)**  
**Affinity Purified Rabbit Polyclonal Antibody (Pab)**  
**Catalog # AP18511a**

**Specification**

---

**TBX15 Antibody (N-term) - Product Information**

Application	IF, WB,E
Primary Accession	<a href="#">O96SF7</a>
Other Accession	<a href="#">O70306</a> , <a href="#">NP_689593.2</a> .
Reactivity	Human, Mouse
Host	Rabbit
Clonality	Polyclonal
Isotype	Rabbit IgG
Calculated MW	65757
Antigen Region	47-73

**TBX15 Antibody (N-term) - Additional Information**

**Gene ID** 6913

**Other Names**

T-box transcription factor TBX15, T-box protein 15, T-box transcription factor TBX14, T-box protein 14, TBX15, TBX14

**Target/Specificity**

This TBX15 antibody is generated from rabbits immunized with a KLH conjugated synthetic peptide between 47-73 amino acids from the N-terminal region of human TBX15.

**Dilution**

IF~~1:10~50  
WB~~1:1000

**Format**

Purified polyclonal antibody supplied in PBS with 0.09% (W/V) sodium azide. This antibody is purified through a protein A column, followed by peptide affinity purification.

**Storage**

Maintain refrigerated at 2-8°C for up to 2 weeks. For long term storage store at -20°C in small aliquots to prevent freeze-thaw cycles.

**Precautions**

TBX15 Antibody (N-term) is for research use only and not for use in diagnostic or therapeutic procedures.

**TBX15 Antibody (N-term) - Protein Information**

**Name** TBX15

## Synonyms TBX14

**Function** Probable transcriptional regulator involved in the development of the skeleton of the limb, vertebral column and head. Acts by controlling the number of mesenchymal precursor cells and chondrocytes (By similarity).

## Cellular Location

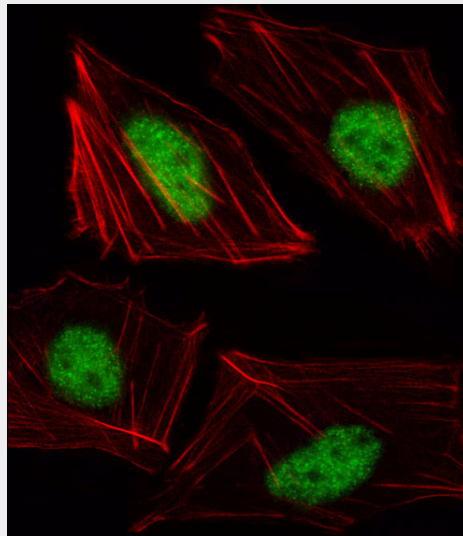
Nucleus {ECO:0000255|PROSITE-ProRule:PRU00201}.

## TBX15 Antibody (N-term) - Protocols

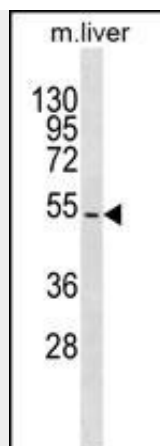
Provided below are standard protocols that you may find useful for product applications.

- [Western Blot](#)
- [Blocking Peptides](#)
- [Dot Blot](#)
- [Immunohistochemistry](#)
- [Immunofluorescence](#)
- [Immunoprecipitation](#)
- [Flow Cytometry](#)
- [Cell Culture](#)

## TBX15 Antibody (N-term) - Images



Fluorescent image of HUVEC cell stained with TBX15 Antibody (N-term)(Cat#AP18511a).HUVEC cells were fixed with 4% PFA (20 min), permeabilized with Triton X-100 (0.1%, 10 min), then incubated with TBX15 primary antibody (1:25, 1 h at 37°C). For secondary antibody, Alexa Fluor® 488 conjugated donkey anti-rabbit antibody (green) was used (1:400, 50 min at 37°C).Cytoplasmic actin was counterstained with Alexa Fluor® 555 (red) conjugated Phalloidin (7units/ml, 1 h at 37°C).TBX15 immunoreactivity is localized to Nucleus significantly.



TBX15 Antibody (N-term) (Cat. #AP18511a) western blot analysis in mouse liver tissue lysates (35ug/lane). This demonstrates the TBX15 antibody detected the TBX15 protein (arrow).

#### **TBX15 Antibody (N-term) - Background**

Probable transcriptional regulator involved in developmental processes.