

GAGE3 Antibody (N-term)
Affinity Purified Rabbit Polyclonal Antibody (Pab)
Catalog # AP18450a

Specification

GAGE3 Antibody (N-term) - Product Information

Application	WB,E
Primary Accession	Q13067
Reactivity	Human
Host	Rabbit
Clonality	Polyclonal
Isotype	Rabbit IgG
Antigen Region	1-30

GAGE3 Antibody (N-term) - Additional Information

Other Names

G antigen 3, GAGE-3, Cancer/testis antigen 43, CT43, GAGE3

Target/Specificity

This GAGE3 antibody is generated from rabbits immunized with a KLH conjugated synthetic peptide between 1-30 amino acids from the N-terminal region of human GAGE3.

Dilution

WB~~1:1000

Format

Purified polyclonal antibody supplied in PBS with 0.09% (W/V) sodium azide. This antibody is purified through a protein A column, followed by peptide affinity purification.

Storage

Maintain refrigerated at 2-8°C for up to 2 weeks. For long term storage store at -20°C in small aliquots to prevent freeze-thaw cycles.

Precautions

GAGE3 Antibody (N-term) is for research use only and not for use in diagnostic or therapeutic procedures.

GAGE3 Antibody (N-term) - Protein Information

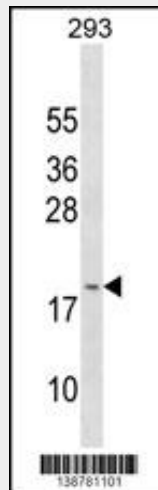
GAGE3 Antibody (N-term) - Protocols

Provided below are standard protocols that you may find useful for product applications.

- [Western Blot](#)
- [Blocking Peptides](#)

- [Dot Blot](#)
- [Immunohistochemistry](#)
- [Immunofluorescence](#)
- [Immunoprecipitation](#)
- [Flow Cytometry](#)
- [Cell Culture](#)

GAGE3 Antibody (N-term) - Images



GAGE3 Antibody (N-term) (Cat. #AP18450a) western blot analysis in 293 cell line lysates (35ug/lane). This demonstrates the GAGE3 Antibody detected the GAGE3 protein (arrow).

GAGE3 Antibody (N-term) - Background

The function of this protein remains unknown.