

GPR172B Antibody (Center)
Affinity Purified Rabbit Polyclonal Antibody (Pab)
Catalog # AP18414C

Specification

GPR172B Antibody (Center) - Product Information

Application	WB,E
Primary Accession	O9NWF4
Other Accession	NP_001098047.1
Reactivity	Human
Host	Rabbit
Clonality	Polyclonal
Isotype	Rabbit IgG
Calculated MW	46317
Antigen Region	162-190

GPR172B Antibody (Center) - Additional Information

Gene ID 55065

Other Names

Solute carrier family 52, riboflavin transporter, member 1, Porcine endogenous retrovirus A receptor 2, PERV-A receptor 2, Protein GPR172B, Riboflavin transporter 1, hRFT1, SLC52A1, GPR172B, PAR2, RFT1

Target/Specificity

This GPR172B antibody is generated from rabbits immunized with a KLH conjugated synthetic peptide between 162-190 amino acids from the Central region of human GPR172B.

Dilution

WB~~1:1000

Format

Purified polyclonal antibody supplied in PBS with 0.09% (W/V) sodium azide. This antibody is purified through a protein A column, followed by peptide affinity purification.

Storage

Maintain refrigerated at 2-8°C for up to 2 weeks. For long term storage store at -20°C in small aliquots to prevent freeze-thaw cycles.

Precautions

GPR172B Antibody (Center) is for research use only and not for use in diagnostic or therapeutic procedures.

GPR172B Antibody (Center) - Protein Information

Name SLC52A1 ([HGNC:30225](#))

Synonyms GPR172B, PAR2, RFT1

Function Plasma membrane transporter mediating the uptake by cells of the water soluble vitamin B2/riboflavin that plays a key role in biochemical oxidation-reduction reactions of the carbohydrate, lipid, and amino acid metabolism (PubMed:[18632736](#), PubMed:[20463145](#)). Humans are unable to synthesize vitamin B2/riboflavin and must obtain it via intestinal absorption (PubMed:[20463145](#)).

Cellular Location

Cell membrane; Multi-pass membrane protein

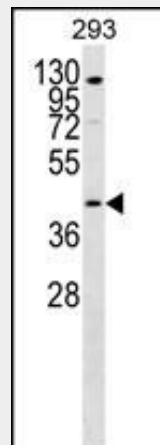
Tissue Location

Widely expressed. Highly expressed in the testis, placenta and small intestine. Expressed at lower level in other tissues.

GPR172B Antibody (Center) - Protocols

Provided below are standard protocols that you may find useful for product applications.

- [Western Blot](#)
- [Blocking Peptides](#)
- [Dot Blot](#)
- [Immunohistochemistry](#)
- [Immunofluorescence](#)
- [Immunoprecipitation](#)
- [Flow Cytometry](#)
- [Cell Culture](#)

GPR172B Antibody (Center) - Images

GPR172B Antibody (Center) (Cat. #AP18414c) western blot analysis in 293 cell line lysates (35ug/lane). This demonstrates the GPR172B Antibody detected the GPR172B protein (arrow).

GPR172B Antibody (Center) - Background

GPCR41 (MIM 607882) and GPCR42 act as receptors for porcine endogenous retrovirus subgroup A (PERV-A).[supplied by OMIM].

GPR172B Antibody (Center) - References

Yonezawa, A., et al. Am. J. Physiol., Cell Physiol. 295 (3), C632-C641 (2008) :
Ericsson, T.A., et al. Proc. Natl. Acad. Sci. U.S.A. 100(11):6759-6764(2003)
Takeda, S., et al. FEBS Lett. 520 (1-3), 97-101 (2002) :