

**EDA2R Antibody (C-term)**  
**Affinity Purified Rabbit Polyclonal Antibody (Pab)**  
**Catalog # AP18402b**

**Specification**

---

**EDA2R Antibody (C-term) - Product Information**

Application	WB,E
Primary Accession	<a href="#">O9HAV5</a>
Other Accession	<a href="#">NP_068555.1</a>
Reactivity	Human
Host	Rabbit
Clonality	Polyclonal
Isotype	Rabbit IgG
Calculated MW	32759
Antigen Region	267-297

**EDA2R Antibody (C-term) - Additional Information**

**Gene ID** 60401

**Other Names**

Tumor necrosis factor receptor superfamily member 27, X-linked ectodysplasin-A2 receptor, EDA-A2 receptor, EDA2R, TNFRSF27, XEDAR

**Target/Specificity**

This EDA2R antibody is generated from rabbits immunized with a KLH conjugated synthetic peptide between 267-297 amino acids from the C-terminal region of human EDA2R.

**Dilution**

WB~~1:1000

**Format**

Purified polyclonal antibody supplied in PBS with 0.09% (W/V) sodium azide. This antibody is purified through a protein A column, followed by peptide affinity purification.

**Storage**

Maintain refrigerated at 2-8°C for up to 2 weeks. For long term storage store at -20°C in small aliquots to prevent freeze-thaw cycles.

**Precautions**

EDA2R Antibody (C-term) is for research use only and not for use in diagnostic or therapeutic procedures.

**EDA2R Antibody (C-term) - Protein Information**

**Name** EDA2R

**Synonyms** TNFRSF27, XEDAR

**Function** Receptor for EDA isoform A2, but not for EDA isoform A1. Mediates the activation of the NF-kappa-B and JNK pathways. Activation seems to be mediated by binding to TRAF3 and TRAF6.

**Cellular Location**

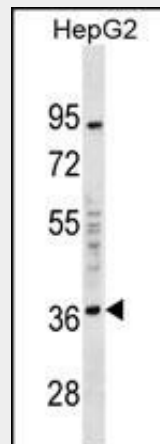
Membrane; Single-pass type III membrane protein.

**EDA2R Antibody (C-term) - Protocols**

Provided below are standard protocols that you may find useful for product applications.

- [Western Blot](#)
- [Blocking Peptides](#)
- [Dot Blot](#)
- [Immunohistochemistry](#)
- [Immunofluorescence](#)
- [Immunoprecipitation](#)
- [Flow Cytometry](#)
- [Cell Culture](#)

**EDA2R Antibody (C-term) - Images**



EDA2R Antibody (C-term) (Cat. #AP18402b) western blot analysis in HepG2 cell line lysates (35ug/lane). This demonstrates the EDA2R Antibody detected the EDA2R protein (arrow).

**EDA2R Antibody (C-term) - Background**

EDA-A1 and EDA-A2 are two isoforms of ectodysplasin that are encoded by the anhidrotic ectodermal dysplasia (EDA) gene. Mutations in EDA give rise to a clinical syndrome characterized by loss of hair, sweat glands, and teeth. The protein encoded by this gene specifically binds to EDA-A2 isoform. This protein is a type III transmembrane protein of the TNFR (tumor necrosis factor receptor) superfamily, and contains 3 cysteine-rich repeats and a single transmembrane domain but lacks an N-terminal signal peptide. Multiple alternatively spliced transcript variants have been found for this gene, but some variants lack sufficient support. [provided by RefSeq].

**EDA2R Antibody (C-term) - References**

Brockschmidt, F.F., et al. Br. J. Dermatol. 162(4):899-903(2010)  
Tanikawa, C., et al. Oncogene 28(34):3081-3092(2009)  
Fujimoto, A., et al. J. Hum. Genet. 54(8):461-465(2009)  
Hillmer, A.M., et al. Hum. Genet. 126(2):255-264(2009)  
Richards, J.B., et al. Nat. Genet. 40(11):1282-1284(2008)