

TRHR Antibody (Center)
Affinity Purified Rabbit Polyclonal Antibody (Pab)
Catalog # AP18399c

Specification

TRHR Antibody (Center) - Product Information

Application	WB,E
Primary Accession	P34981
Other Accession	Q01717 , NP_003292.1
Reactivity	Human
Predicted	Rat
Host	Rabbit
Clonality	Polyclonal
Isotype	Rabbit IgG
Calculated MW	45085
Antigen Region	209-238

TRHR Antibody (Center) - Additional Information

Gene ID 7201

Other Names

Thyrotropin-releasing hormone receptor, TRH-R, Thyroliberin receptor, TRHR

Target/Specificity

This TRHR antibody is generated from rabbits immunized with a KLH conjugated synthetic peptide between 209-238 amino acids from the Central region of human TRHR.

Dilution

WB~~1:1000

Format

Purified polyclonal antibody supplied in PBS with 0.09% (W/V) sodium azide. This antibody is purified through a protein A column, followed by peptide affinity purification.

Storage

Maintain refrigerated at 2-8°C for up to 2 weeks. For long term storage store at -20°C in small aliquots to prevent freeze-thaw cycles.

Precautions

TRHR Antibody (Center) is for research use only and not for use in diagnostic or therapeutic procedures.

TRHR Antibody (Center) - Protein Information

Name TRHR

Function Receptor for thyrotropin-releasing hormone (TRH). Upon ligand binding, this

G-protein-coupled receptor triggers activation of the phosphatidylinositol (IP3)-calcium-protein kinase C (PKC) pathway.

Cellular Location

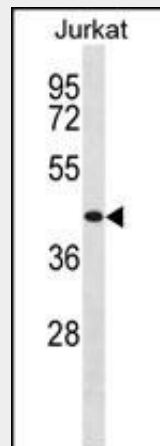
Cell membrane; Multi-pass membrane protein

TRHR Antibody (Center) - Protocols

Provided below are standard protocols that you may find useful for product applications.

- [Western Blot](#)
- [Blocking Peptides](#)
- [Dot Blot](#)
- [Immunohistochemistry](#)
- [Immunofluorescence](#)
- [Immunoprecipitation](#)
- [Flow Cytometry](#)
- [Cell Culture](#)

TRHR Antibody (Center) - Images



TRHR Antibody (Center) (Cat. #AP18399c) western blot analysis in Jurkat cell line lysates (35ug/lane). This demonstrates the TRHR Antibody detected the TRHR protein (arrow).

TRHR Antibody (Center) - Background

Thyrotropin-releasing hormone (TRH; MIM 275120), a small neuropeptide, is widely distributed throughout the central and peripheral nervous system as well as in extraneural tissues. The peptide is synthesized in the hypothalamus and transported by the portal vascular system to the anterior pituitary where it acts on thyrotropic and lactotropic cells to promote secretion of TSH and prolactin, respectively. Thyrotropin-releasing hormone receptor is a G protein-coupled receptor that activates the inositol phospholipid-calcium-protein kinase C transduction pathway upon the binding of TRH. The TRHR gene is expressed in the thyrotrope cells of the anterior pituitary.

TRHR Antibody (Center) - References

Gehret, A.U., et al. Biochem. J. 428(2):235-245(2010)
Gehret, A.U., et al. Mol. Pharmacol. 77(2):288-297(2010)
Zhu, C.C., et al. J. Biol. Chem. 277(31):28228-28237(2002)
Matre, V., et al. J. Neurochem. 72(1):40-50(1999)
Iwasaki, T., et al. J. Biol. Chem. 271(36):22183-22188(1996)